

NEWSLETTER 14

ST BRENDAN'S CATHOLIC PRIMARY SCHOOL



We gather on Gunaikurnai Country. We pay our respects to their Elders; past, present and emerging. We also acknowledge the ongoing living culture and connection to Country of all First Peoples.




Please join us in supporting our First Holy Communion Sacrament Candidates at their Commitment Mass.
When: This Sunday 24th May
Where: St Brendan's Church



Every school a home of peace

"Peace I leave with you", says the Lord, "my own peace I give you". (John 14:27)

Celebrating
CATHOLIC EDUCATION WEEK
15 to 22 May 2026



Diocese of Sale
Catholic Education Ltd



www.lakesent.catholic.edu.au



principal@lakesent.catholic.edu.au



03 5155 2712



40 Golf Links Road,
Lakes Entrance, VIC, 3909

Internet Banking : BSB 083 879 A/C 695096861 Account Name : St Brendan's School



Term 2 - Up Coming Events

	MON	TUE	WED	THU	FRI	
WEEK 5	May 18	May 19	May 20	May 21	May 22 9.10am Whole School Prayer: Pentecost District Winter Sports	May 24 9am First Communion Commitment Mass
<i>Catholic Education Week</i>						
WEEK 6	May 25	May 26	May 27 9.10am Year 6 Class Prayer	May 28 3.30pm First communion parent/student workshop	May 29 9.10am 3-4 Class Mass 2.30pm Assembly: Year1/2 Green	
WEEK 7	June 1 Year 1-2 Excursion	June 2	June 3	June 4 Regional Cross Country	June 5 No School	
WEEK 8	June 8 King's Birthday	June 9 Collaborative Conferences	June 10 Collaborative Conferences	June 11 Collaborative Conferences	June 12 9.10am Foundation Mass 2.30pm Assembly: Year1-2 Blue Division Winter Sports	June 15 9am First Communion Mass

TERM 2 Week 9: Monday 15th June - Wednesday 17th June - Year 6 Melbourne Camp
 Week 10: Friday 26th June - Term 2 Ends 2.15pm

Issue 4 Open Now! Earn a **\$5 DISCOUNT CODE** (included with order confirmation)

SCHOLASTIC Book Club

Providing Value to Families

Book Club

ORDERS ARE DUE Friday 5th June

SCHOLASTIC Book Club

with sympathy

Please keep the Fearnley family - Hudson (Year 1) and Kylo (Year 3) in your prayers on the recent loss of a loved one.

Our thoughts and prayers are with you all.

Tues 26th May:	St. Brendan's	Lakes Entrance	9.30 am
Wed 27th May:	St. Colman's	Orbost	No Mass
Funeral	St. Brendan's	Lakes Entrance	11.30 am
		Requiem Mass for Mrs Carmel Humphrey	
Fri 29th May:	St. Brendan's	Lakes Entrance	9.30 am
Sat 30th May:	St. Brendan's	Lakes Entrance	9.30 am
	St. Joseph's	Swan Reach	5.00 pm
Sun 31st May:	St. Brendan's	Lakes Entrance	9.00 am
	St. Colman's	Orbost	11.00 am

EXPOSITION AND BENEDICTION: After Friday 9.30 am Mass.

ST BRENDAN'S CHURCH, LAKES ENTRANCE will be open for: **PRIVATE PRAYER** from 9am - 4pm Daily

EXPOSITION AND BENEDICTION: St. Brendan's: After 9.30 am Mass on Fridays

RECONCILIATION: Before Mass at Lakes Entrance, Swan Reach & Orbost or by arrangement.

ST. BRENDAN'S - ROSARY: 1st Saturday of the month 8.45am before Mass. Next Rosary Morning **6th June 2026**

VISITATIONS: Please contact the Parish Office to request a home visit or to raise any other concerns in confidence. ph: **New Number 0403 572 474** or email stbrendan@bigpond.com

MORNING TEA Morning tea **Sunday 14th June** after Mass in Hobby Room.

PARISHES IN PARTNERSHIP WEEKLY MASSES & LITURGY TIMES



ATHLETICS DAY

On the 15th of May St Brendan's had our athletics day carnival! During the day there were many events held such as high jump, 800m, hurdles and 100m.

Many students had a very fun day and everywhere you looked you could see many people having a great time. A great job to the many students who made it through in many different events and even if you didn't make it through you all gave it an amazing go. The day started off with the House Captains leading the Houses down to the oval. The chants were super loud from everyone, even the foundation's who only learnt the chant the day before. Then all the age groups departed and went off to begin the day. At the end we had the House relays which were a blast. After the year six, Nagle students, parents and teachers had the competitive relay and the Ms Alsop trophy was awarded. In the end Yellow House won with a whopping 717 and Green House followed with 689. Then Red House came with 649 and Blue ended with 631. The day was a fun day overall and had many cheers and laughs.



Isla Strong & Jordan Morrison



ATHLETICS DAY



ATHLETICS DAY



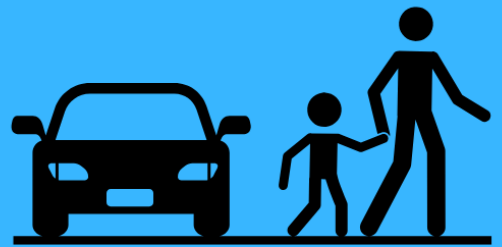
ATHLETICS DAY



A reminder that the car park at the front of the school and the church are NOT drop off zones.

If you enter these car parks you MUST walk your children

into the school.



DROP OFF ZONE is via the Mary MacKillop Hall carpark only.

The Disabled Parking spaces are for people with permits only.

Thank you.



The Victorian Premiers' Reading Challenge is now open and we're excited to be taking part!

All children from birth to Year 10 are welcome to join in.

This year's Challenge theme is 'Stories to discover. Stories to tell'. Stories can inspire and challenge us, and help us grow. They open our eyes to new worlds and new ways of thinking.

The number of books read can be varied for everyone's needs. Children from Foundation to Year 2 are encouraged to read or 'experience' 30 books with their parents and teachers. Children from Year 3 to Year 10 are challenged to read 15 books.

All children who complete the Challenge will receive a certificate of achievement signed by the Victorian Premier and former premiers.

To learn more about the Challenge, visit [Premiers' Reading Challenge | vic.gov.au](http://Premiers'ReadingChallenge|vic.gov.au)

The Premiers Reading Challenge has an online recording system which is intended for students to enter their books at home.

Happy reading!



Students wishing to participate, need to send Katrina an email at: kwykes@lakesent.catholic.edu.au They will then be emailed their username, password and details to access the online computer system.

WINTER UNIFORM

This is an important requirement and must be worn by every child each day. Your support in this matter is paramount to its effectiveness. We pride ourselves on our uniform and need the support of all families in ensuring that this policy is strictly adhered to. Generally summer uniform is worn in Terms One and Four and winter uniform is worn in Terms Two and Three. There is changeover period for uniforms at the beginning of Term Two and Term Four.

UNIFORM ITEMS - AVAILABLE FROM NICK'S IN BAIRNSDALE MOST ITEMS ARE REGULATION, MEANING THAT THE SCHOOL HAS DETERMINED THE STYLE OR MANUFACTURE.



BOYS WINTER UNIFORM		GIRLS WINTER UNIFORM
	Sky blue long/short sleeve shirt	Winter Tunic (Year F,1,2,3)
	Grey trousers	Winter Skirt (Year 4/5/6)
	Bomber Jacket (with emblem)	Blue long sleeve blouse
	Polar Fleece /Jacket (with emblem)	Bomber Jacket (with emblem)
	Grey socks - above ankle (no logos)	Polar Fleece Jacket (with emblem)
	Black leather school shoes/boots	Navy tights/white school socks – above ankle (no logos)
	Navy 'Midford' Pant	Navy 'Midford' Pant
	Black leather school shoes or buckle/lace-up/T-bar	Black leather school shoes or buckle/lace-up/T-bar

BOYS & GIRLS WINTER SPORTS UNIFORM

- Blue polo shirt with emblem (Short Sleeve)
- Navy track pants without logos
- Bomber Jacket / Polar Fleece Jacket (with emblem)
- White sports socks (above ankle) – below ankle footlet style not acceptable (no logos).
- Running shoes / sneakers (**not skate or fashion shoes**)



(BLACK SHORTS MAY BE WORN UNDER TRACKSUIT PANTS FOR SPORT AND OUTSIDE PLAY.)

UNIFORM REMINDER: STUDENTS ARE REQUIRED TO WEAR JUMPERS AND TRACKSUIT PANTS TO SCHOOL ON SPORTS UNIFORM DAYS. MANY STUDENTS ARE PRESENTING TO THE OFFICE IN THE MORNING, COLD, REQUESTING JUMPERS. PLEASE ENSURE YOUR CHILD BRINGS A JUMPER TO SCHOOL EACH DAY. THANK YOU.

HAIR - HAIR LONGER THAN COLLAR LENGTH, MUST BE TIED BACK COMPLETELY. THIS IS TO HELP RESTRICT THE SPREAD OF NITS AND LICE AND FOR STUDENT SAFETY. HEADBAND, HAIR TIES, RIBBONS, SCRUNCHIES AND CLIPS MUST BE BLUE, BLACK OR BROWN.

JEWELLERY - IS RESTRICTED TO THE FOLLOWING - A WRIST WATCH, NO MORE THAN ONE SMALL MATCHING PAIR OF STUDS OR SLEEPERS IN THE EAR LOBE - GOLD, SILVER OR GEMSTONE, A RELIGIOUS MEDALLION ON A CHAIN TO BE WORN UNDER CLOTHING. FASHION JEWELLERY, MAKE-UP AND NAIL POLISH ARE NOT PERMITTED.

FACT SHEET FOR PARENTS, GUARDIANS AND CARERS

WHAT IS THE NCCD?

The Nationally Consistent Collection of Data on School Students with Disability (NCCD) takes place every year.

The NCCD is a collection that counts:

- the number of school students receiving an adjustment or 'help' due to disability
- the level of adjustment they are receiving to access education on the same basis as other students.

Students are counted in the NCCD if they receive ongoing adjustments at school due to disability. This 'help' allows them to access education on the same basis as a child without disability. The NCCD uses the definition of disability in the *Disability Discrimination Act 1992*.

Schools provide this information to education authorities.

Go to *What is a reasonable adjustment?* below to learn about adjustments.

WHY IS THIS DATA BEING COLLECTED?

All schools in Australia must collect information about students with disability.

The NCCD:

- ensures that the information collected is transparent, consistent and reliable
- provides better information that improves understanding of students with disability
- allows parents, guardians, carers, teachers, principals, education authorities and government to better support students with disability.

Student with disability loading

Funding from the Australian Government for students with disability is based on the NCCD through the student with disability loading.

Students with disability who are counted in the top three levels of the NCCD (extensive, substantial and supplementary) attract the loading. Funding is based on a per-student amount at each of the three levels of additional support. The amount of the loading reflects the level of support students with disability need to participate fully in school, with higher funding for those who need higher levels of support.

Australian Government recurrent school funding is provided as a lump sum to school authorities including state and territory governments, which can then distribute the funding to their member schools according to their own needs-based arrangements.

The Government expects schools and school systems to consider their funding from all sources (ie Australian Government, state and territory and private) and prioritise their spending to meet the educational needs of all of their students, including students with disability.

WHAT ARE THE BENEFITS OF THE NCCD FOR STUDENTS?

The information collected by the NCCD helps teachers, principals, education authorities and governments to better support students with disability at school.

The NCCD encourages schools to review their learning and support systems and processes. This helps schools to continually improve education outcomes for all students.

WHAT MUST SCHOOLS DO FOR STUDENTS WITH DISABILITY?

All students have the right to a quality learning experience at school.

Students with disability must be able to take part in education without discrimination and on the same basis as other students. To ensure this, schools must make reasonable adjustments if needed for students with disability. Educators, students, parents, guardians, carers and others (eg health professionals) must work together to ensure that students with disability can take part in education.

The *Disability Discrimination Act 1992* and the *Disability Standards for Education 2005* describe schools' responsibilities.

WHAT IS A REASONABLE ADJUSTMENT?

An adjustment is an action to help a student with disability take part in education on the same basis as other students.

Adjustments can be made across the whole school (eg ramps into school buildings). They can be in the classroom (eg adapting teaching methods). They can also be for individual student need (eg providing personal care support).

The school assesses the needs of each student with disability. The school provides adjustments in consultation with the student and/or their parents, guardians and carers.

Schools must make reasonable adjustments if needed. The *Disability Standards for Education 2005* define 'reasonable adjustment' as an adjustment that balances the interests of all parties affected.

WHO IS INCLUDED IN THE NCCD?

The definition of disability for the NCCD is based on the broad definition under the *Disability Discrimination Act 1992*.

The following students are examples of those who may be included in the NCCD if they need monitoring and adjustments:

- students with learning difficulties (such as dyslexia)
- students with chronic health conditions (such as epilepsy or diabetes).

WHO COLLECTS INFORMATION FOR THE NCCD?

Schools identify which students will be counted in the NCCD. They base their decisions on the following:

- adjustments provided for the student (after consultation with the student and/or their parents, guardians and carers)
- the school team's observations and professional judgements
- any medical or other professional diagnoses
- other relevant information.

School principals must ensure that information for the NCCD is accurate.

WHAT INFORMATION IS COLLECTED?

A student is counted in the NCCD if they receive reasonable adjustments at school due to disability.

Each year, schools collect the following information about the student, including:

- their year of schooling
- the level of adjustment received
- the broad type of disability.

For students who have more than one disability, the school uses professional judgement to choose one category of disability. They choose the category that most affects the student's access to education and for which adjustments are being provided.

A high level summary of the NCCD data is available to all Australian state and territory governments to improve policies and programs for students with disability.

HOW IS THIS DATA USED?

The NCCD data informs funding and work by schools and sectors. It ensures that support for students with disability becomes routine in the day-to-day practice of schools. The NCCD also supports students in the following ways.

- The NCCD helps schools better understand their legislative obligations and the *Disability Standards for Education 2005*.
- Schools focus on the individual adjustments that support students with disability. This encourages them to reflect on students' needs and to better support students.
- The NCCD facilitates a collaborative and coordinated approach to supporting students with disability. It also encourages improvements in school documentation.
- The NCCD improves communication about students' needs between schools, parents, guardians, carers and the community.

The Australian Curriculum, Assessment and Reporting Authority (ACARA) annually publishes high-level, non-identifying NCCD data.

WHEN DOES THE NCCD TAKE PLACE?

The NCCD takes place in August each year.

IS THE NCCD COMPULSORY?

Yes. All schools must collect and submit information each year for the NCCD. This is detailed in the *Australian Education Regulation 2013*. For more information, ask your school principal or the relevant education authority.

HOW IS STUDENTS' PRIVACY PROTECTED?

Protecting the privacy and confidentiality of all students is an essential part of the NCCD.

Data is collected within each school. Personal details, such as student names or student identifiers, are not provided to federal education authorities. Learn more about privacy in the *Public Information Notice*.

FURTHER INFORMATION

Contact your school if you have questions about the NCCD. You can also visit the [NCCD Portal](#).

There is also a free e-learning resource about the *Disability Discrimination Act 1992* and *Disability Standards for Education 2005*.

This document must be attributed as *Fact sheet for parents, guardians and carers*.

SIMON Everywhere App



After you've setup your PAM account from your email:

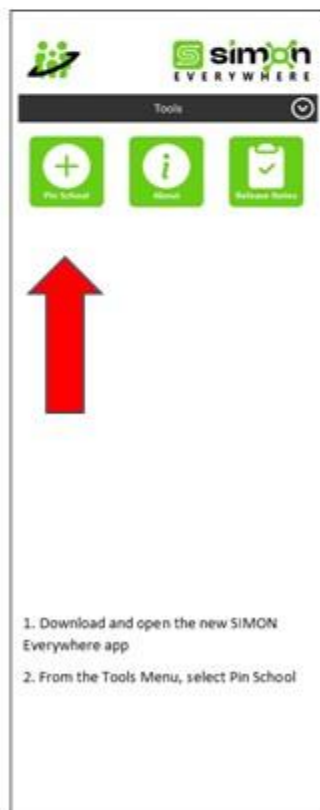
1. On a smart device, download the 'SIMON Everywhere' app
2. Open app and select 'Tools', 'Pin School' and enter the School Code
3. Select 'PAM Login'
4. Enter your username (full email address) and password
5. Tick 'Verify You Are Human' and Sign In
6. Check your assigned email for Multi-Factor Authentication Code, Enter code and press Continue
7. Click Home to view your PAM account.

Click on a student's name to view their individual profile

The school code was emailed to all users. It can also be found when logged into PAM and can be found when you click on your user icon. Please contact the office if you require assistance.



*This is not the school code.



Lunch orders are available on a Friday and are supplied by Mama Vu's Kitchen.

All orders will need to be in by Thursday morning - before 12pm for lunch on Friday

NO LATE ORDERS will be accepted.

Please make sure that all orders are on a brown paper lunch order bag with the correct money

Siblings will require one bag each

Name and class needs to be clearly stated on the bag

Please take note of prices.



ST BRENDAN'S STUDENT LUNCH ORDER		MAMA VU'S KITCHEN	
SUSHI ROLLS		HOT FOOD	
Salmon & Avo	\$4	Fried Rice	\$7
Avocado	\$4	Fried Pork Gyoza (6pc)	\$7
Cucumber	\$4	Spring Rolls (4pc)	\$7
Tempura Vege	\$4	Chicken Hokkein Noodle	\$10
Teriyaki Chicken	\$4	Honey Chicken + Fried Rice	\$10
Chicken Katsu	\$4	Teriyaki Chicken + Fried Rice	\$10
Panko Prawn	\$4	Chicken Oyster Stir fry + Fried rice	\$10
Tuna & Avo	\$4	Grilled Pork Vermicelli Bowl	\$10
DRINKS		Grilled marinated pork served over vermicelli noodles with fresh herbs, pickled veg, peanuts, and a light Vietnamese nuoc cham dressing.	
Lightly Sparkling Mineral Water	\$3		
Lime, Raspberry, Watermelon, Mango,			

LUNCH ORDERS ARE AVAILABLE

ON A FRIDAY

ORDER MUST BE IN THURSDAY



Menu Location: PAM - Knowledge Banks: School Notes/Information & St Brendan's Website



HEAD LICE ALERT

PLEASE CHECK YOUR CHILD'S HAIR TONIGHT!!

TO CHECK

Check the scalp for insects or eggs. Use a fine-tooth comb on wet hair then comb through the hair in sections looking for eggs or lice, repeat over a few days.

TO TREAT

Wet the hair and scalp with conditioner or use chemical shampoo/ lotion (containing insecticide) - this will kill the lice and eggs. Using a fine metal comb, or special head lice comb you can get from a chemist, go through the hair in sections to comb the lice and eggs out.

Always re-treat 7-10 days after the first treatment, to kill any head lice that may have hatched from eggs that survived the first treatment.

TIPS

- ✓ Check and treat the hair every night
- ✓ Please tie up long hair for school
- ✓ If your child has head lice please check everyone in the family home
- ✓ Do not share hairbrushes, towels, hats/ scarves etc.



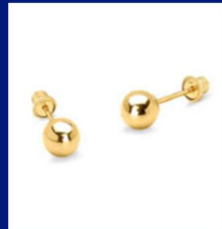
Uniform Reminders



Jewellery is restricted to the following – a wrist watch, no more than one small plain matching pair of studs or sleepers in the ear lobe – gold, silver or gemstone, a religious medallion on a chain to be worn under clothing. Fashion jewellery, make-up and nail polish are not permitted.

Hair is to be kept neat and tidy at all times. Hair longer than collar length, must be tied back completely. This is to help restrict the spread of nits and lice and for student safety. Headband, hair ties, ribbons, scrunchies and clips must be blue, black or brown.

It is not appropriate for children to come to school with dyed or inappropriate hair styles as deemed by the Principal.



NAGLE
CATHOLIC COLLEGE

Key Dates for Year 7 2027

Enrolments:

- **Applications are now open** (online via our [website](#))
- **25 March** – Discover Nagle: Year 7 2027 Information Evening
- **8 May** – Applications Close
- **June** – Enrolment Interviews (dates TBC)
- **27 July** – Offers of Placement made
- **01 December** – Orientation Day

Please note that the Department of Education Application for Year 7 Placement Form is not an application for enrolment at Nagle College.

Families wishing their child to be considered must complete the College's enrolment process.



LAKES ENTRANCE
PRIMARY SCHOOL COUNCIL
OSHC

Before & After School Care

PROGRAM



5-12 YEARS OLD

Our OSHC is the ideal setting for students to explore new interests or establish lasting friendships, while also having a great time together!

- Homework Assistance
- Creative Art & Crafts
- Exciting Group Activities
- Snacks & Refreshments Provided

LEARN MORE:

(03) 5155 1812

oshc.lakes.entrance.ps@education.vic.gov.au



A FREE WEBINAR

Understanding Anxiety and Depression to Foster Resilience

PART 2

Supporting Primary & Secondary students

This webinar is **Part II** of a series.

In this session, topics include:

- Staying Calm and Connected
- Building Daily Routines
- Meeting the Needs of Neurodivergent Learners



Online, Wednesday
10 June, 2026
7.30 pm



Dr Emma Woodward

Emma is recognised for her work as a child psychologist and TEDx speaker, keynote presenter, trainer and facilitator. She is also a regular SchoolTV presenter.



Dr Joe Stammeijer

A specialist in forensic psychiatry and a lecturer in medical education focusing on innovative practice and professional leadership. Joe is also a contributor to SchoolTV.

Don't miss out.
FREE event.
Scan to register.



YOU ARE INVITED TO



BOUNCE FOUNTAIN GATE! HOP



TUESDAY
7th July 2026



NARRE WARREN
Activity starts & ends at Morwell office



AGE
Open to children aged 5 - 12 years old with a current NDIS plan.



ACTIVITIES
Swap screen time for air time at Bounce, with lots of trampolines to try and fun times only!



EXPRESSION OF INTEREST
Scan the QR code, call 1300 736 765 or email admin@icg.asn.au



YOU ARE INVITED TO



PUPPET SHOW & ART CLASS! HOP



THURSDAY
2nd July 2026



TRARALGON
Activity starts & ends at Morwell office



AGE
Open to children aged 5 - 12 years old with a current NDIS plan.



ACTIVITIES
Enjoy the spectacular Shadow Puppet Show at the Gippsland Performing Arts Centre, followed by an art session in the afternoon!



EXPRESSION OF INTEREST
Scan the QR code, call 1300 736 765 or email admin@icg.asn.au



Who was **there for you** this week, and what did they do to show they care?



THE RESILIENCE PROJECT.

East Gippsland Aquatic Strategy



Help shape the future of aquatic facilities in East Gippsland

We're creating a new **Aquatic Strategy** and want to hear from you.

The strategy will consider:

- Current aquatic community needs and perspectives.
- Area growth and projected populations.
- Current condition of existing facilities.
- Costs of the service and facilities over the next 10 years.
- Infrastructure renewal, service improvement and strategic investment.
- Alignment with the Council Plan and sports facility planning priorities.

Community survey now open

Please scan the QR code to complete the survey and learn more or visit any of our recreation or service centres. Survey closes 29 May 2026.



<https://yoursay.eastgippsland.vic.gov.au/east-gippsland-aquatic-strategy>

Questions about the engagement and survey can be directed to @leisure Planners via email to info@atleisure.com.au



East Gippsland Shire Council
Phone 5153 9500
Email feedback@egipps.vic.gov.au
Web eastgippsland.vic.gov.au

CROSS COUNTRY SEASON



Join us for the 2026 Cross Country Season
2 FREE Trails are available.



SATURDAY'S
2ND MAY - 29TH AUGUST

**LAKES ENTRANCE
SECONDARY COLLEGE**

Start at
9:30AM

U6 - 500m
U7 & U8 - 1km
U9 & U10 - 1.5km
U11 & U12 - 2km
U13 & UP - 3km

*VENUE MAY CHANGE ON CERTAIN DATES

HOLIDAY *intensive* SWIM PROGRAM

FAST TRACK
YOUR CHILDS
SWIMMING
ABILITY!

Monday 6 - Friday 10 July 2026
Cost \$65.00 for ages 3 and up

On confirmation of booking a \$20 deposit will be required to secure your child's spot.

DAILY
30 MINUTE
LESSONS OVER
5 DAYS!

Enrolments due
Friday 26 June

ENROL ONLINE
OR SCAN THE
QR CODE



43 Palmers Road, Lakes Entrance
(03) 5155 333
lakesaquadome.com.au



Apex Club of Bairnsdale Time Capsule Celebration

Sealed 1975 • Opened 2001
Opening 2026 • Resealing for 2051!



Saturday 23rd May 2026

Opening 10:30am
Resealing 11:30am



Purchase your envelope now
& leave your mark in History!

ENVELOPES AVAILABLE FOR PURCHASE
\$5 AND \$10 OPTIONS - CASH ONLY
SCHOOLWORKS SUPPLIES
MACLEOD ST, BAIRNSDALE



Free BBQ lunch supplied by the
Apex Club of Bairnsdale

BRHS All funds raised supporting
BRHS Maternity ward

TIME CAPSULE ONLINE ENVELOPE
PURCHASE



Enquiries: Bairnsdale@apex.org.au
<https://www.facebook.com/ApexBairnsdale>

Rhymetime

at your local library

Storytime

at your local library

Bairnsdale Library
Wednesday 10.30am

Lakes Entrance
Service Centre
Wednesday 11.00am

Orbost
Service Centre
Thursday 10.00am

Paynesville
Service Centre
Monday 10.30am

Mallacoota
Service Centre
Tuesday 10.00am



Bairnsdale Library
Tuesday 11.00am

Lakes Entrance
Service Centre
Tuesday 11.00am

Orbost Service Centre
Tuesday 10.30am

Paynesville Service Centre
Tuesday 11.00am

Mallacoota
Service Centre
Thursday 2.30pm



EAST GIPPSLAND
SHIRE LIBRARIES

EAST GIPPSLAND
SHIRE LIBRARIES

NEW!

East Gippsland Shire Council

KINDERGARTEN CENTRAL REGISTRATION SERVICE

Is your child attending a funded
3- or 4-year-old kindergarten in 2027?

From April 2026, families can register
for 3- or 4-year-old kindergarten through
Council's Central Registration Service



Contact the Early Years Team:

earlyyears@egipps.vic.gov.au

[03\) 5153 9500](tel:03151539500)

Scan the QR Code



NEW!

East Gippsland Shire Council

KINDERGARTEN CENTRAL REGISTRATION SERVICE

The Central Registration Service ensures the process of registration and enrolment is simple, consistent, inclusive and equitable.

It provides a single point for families to register for multiple kindergarten services.

To allocate kindergarten places in line with the Department of Education's Priority of Access criteria.

First round offers open 1 April 2026 & close 30 June 2026. You can complete a pre-registration form at any time.

Scan the QR code or visit our website to complete an online registration form.

Register for kindergarten in 4 easy steps:

1. **Register**- Family completes an online form
2. **Allocate** - Council carefully reviews all registrations and allocates kindergarten places
3. **Confirm**- Families receive a kindergarten offer
4. **Enrol**- Families complete the child's enrolment directly with the kindergarten.



Contact the Early Years Team:

earlyyears@egipps.vic.gov.au

[03\) 5153 9500](tel:03151539500)

Scan the QR Code

