

15 May, 2026

NEWSLETTER 13

ST BRENDAN'S CATHOLIC PRIMARY SCHOOL

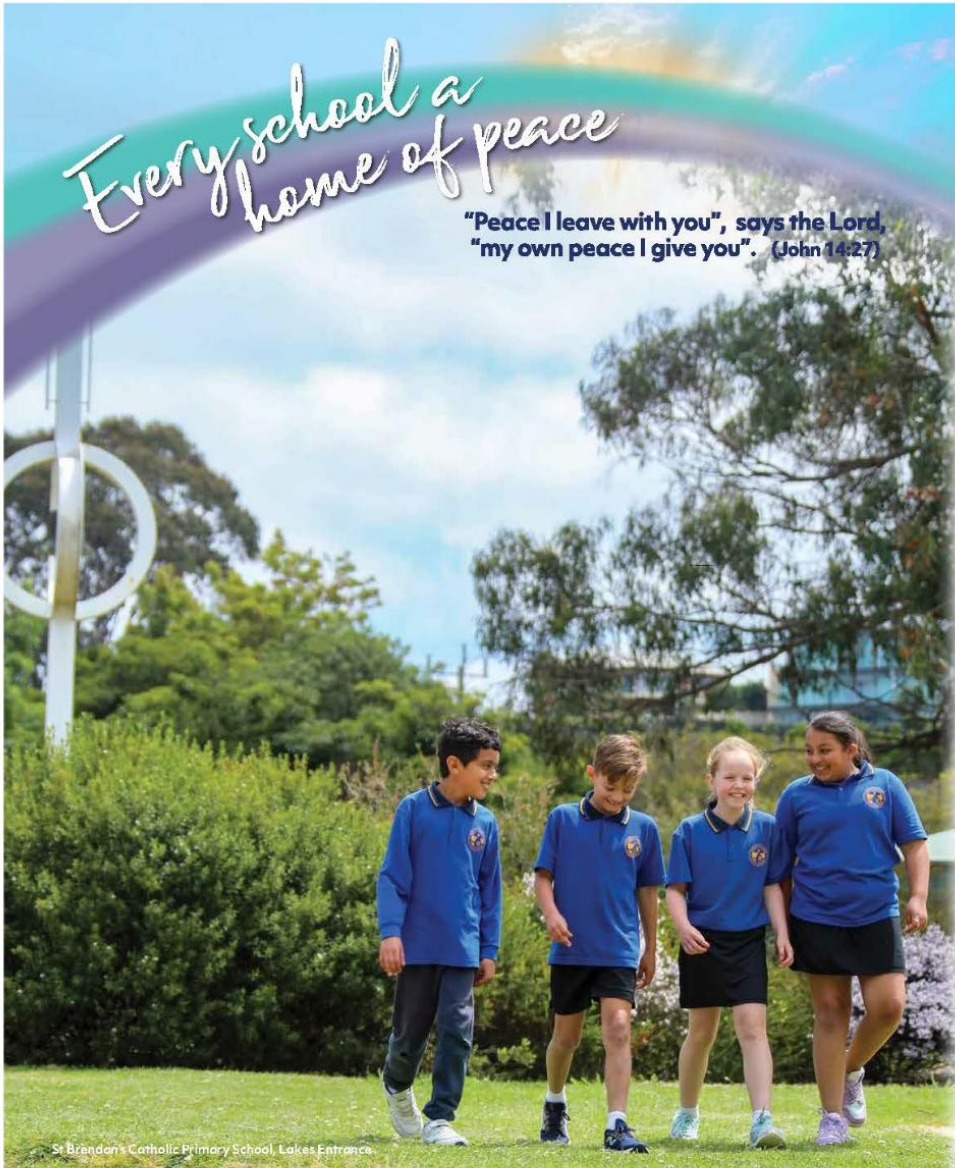


We gather on Gunaikurnai Country. We pay our respects to their Elders; past, present and emerging. We also acknowledge the ongoing living culture and connection to Country of all First Peoples.



Every school a home of peace

"Peace I leave with you", says the Lord,
"my own peace I give you". (John 14:27)



St Brendan's Catholic Primary School, Lakes Entrance



Celebrating
CATHOLIC EDUCATION WEEK
15 to 22 May 2026



Diocese of Sale
Catholic Education Ltd



Reminder:

Please remember to check PAM for granting permissions for school activities.

Current Activities:

- Choir Practice @ Nagle College
- Foundation Big Day Out
- District Winter Sports
- Year 6 Melbourne Camp

Thank you to the Dad's for helping cook the BBQ for Mother's Day Breakfast and for all the kind donations of bacon and eggs. We couldn't run these activities without your help.



www.lakesent.catholic.edu.au



principal@lakesent.catholic.edu.au



03 5155 2712



40 Golf Links Road,
Lakes Entrance, VIC, 3909

Internet Banking : BSB 083 879 A/C 695096861 Account Name : St Brendan's School

Term 2 - Up Coming Events

	MON	TUE	WED	THU	FRI	
WEEK 5	May 18	May 19 9.10am 1-2 Class Prayer	May 20 Catholic Education Week Mass- Nagle	May 21 Foundation Excursion - Forge Theatre	May 22 9.10am Whole School Prayer: Pentecost District Winter Sports	May 24 9am First Communion Commitment Mass
<i>Catholic Education Week</i>						
WEEK 6	May 25	May 26	May 27 9.10am Year 6 Class Prayer	May 28 3.30pm First communion parent/student workshop	May 29 9.10am 3-4 Class Mass 2.30pm Assembly: Year1/2 Green	
WEEK 7	June 1 Year 1-2 Excursion	June 2	June 3	June 4 Regional Cross Country	June 5 No School	
WEEK 8	June 8 King's Birthday	June 9 Collaborative Conferences	June 10 Collaborative Conferences	June 11 Collaborative Conferences	June 12 9.10am Foundation Mass 2.30pm Assembly: Year1-2 Blue Division Winter Sports	June 15 9am First Communion Mass

TERM 2 Week 9: Monday 15th June - Wednesday 17th June - Year 6 Melbourne Camp
 Week 10: Friday 26th June - Term 2 Ends 2.15pm

PENTECOST WHOLE SCHOOL PRAYER

Come Holy Spirit!



Come and celebrate
Pentecost with us.
Date: Friday, 22nd May
Time: 9:10am
Where: St Brendan's Church

All Welcome



Tues 19th May:	St. Brendan's The Word of God and Communion Service.	Lakes Entrance	9.30 am
Wed 20th May:	St. Colman's	Orbost	No Mass
Fri 22nd May:	St. Brendan's Whole School Prayer—Pentecost	Lakes Entrance	9.10 am
Sat 23rd May:	St. Brendan's St. Joseph's The Word of God and Communion Service.	Lakes Entrance Swan Reach	9.30 am 5.00 pm
Sun 24th May:	St. Brendan's Pentecost Sunday St. Colman's St Joseph's Vietnamese Mass.	Lakes Entrance Orbost Swan Reach	9.00 am 11.00 am 5.00 pm

EXPOSITION AND BENEDICTION: After Friday 9.30 am Mass.

ST BRENDAN'S CHURCH, LAKES ENTRANCE will be open for:
PRIVATE PRAYER from 9am - 4pm Daily

EXPOSITION AND BENEDICTION: St Brendan's: After 9.30 am Mass on Fridays

RECONCILIATION: Before Mass at Lakes Entrance, Swan Reach & Orbost or by arrangement.

ST. BRENDAN'S - ROSARY: 1st Saturday of the month 8.45am before Mass.
 Next Rosary Morning **6th June 2026**

VISITATIONS: Please contact the Parish Office to request a home visit or to raise any other concerns in confidence. ph: **New Number 0403 572 474** or email stbrendan@bigpond.com

MORNING TEA Morning tea **Sunday 14th June** after Mass in Hobby Room.

**PARISHES IN PARTNERSHIP
WEEKLY MASSES & LITURGY TIMES**

MOTHER'S DAY BREAKFAST

Evie McMeeken & Ivy Doland

Last Friday, we enjoyed a yummy breakfast with our special mothers, grandmothers and mother figures in our life.

We appreciate everything they do for us as Mother's day has already passed. We hope that everyone enjoyed their special day and had an amazing amount of fun.

We also did a raffle for a our mothers after the breakfast. We would like to thank the families and businesses for donating some amazing prizes for our mothers. We are so very grateful and lucky!

We also would like to thank everyone who donated some food and their time to help out. I hope on Sunday everyone and their mothers/mother figures had a fantastic day and students treated their mother with love.

Here's what some of the students thought about the breakfast:

Year 6 - Indie: The Mother's day breakfast was nice with lots of good food. On Mother's day I went out for dinner with my mum, brother and Evie.



Year 5 - Blake: I spent time with my mum and hung out with her lots. I ate some good food for breakfast and spent more time with my mum.



Year 4 - Chad: On the Mother's day breakfast I ate food with my mum and brother. I got her a pair of boots that she liked and we also went to Orbost footy and had fun.



Year 3 - Sadie: I ate food with mum. On Mother's day we watched a footy game and my mum loved the bracelet we got her.



Year 2 - Taylah

I ate food at the Mother's day breakfast and got photos taken with my mum and family. I got flowers and went out for lunch and had a barbeque for dinner.



Year 1 - Shaivyaa

My mother loved the scalp massage we got her. We also did breakfast in bed and on the Mother's day breakfast we ate lots of yummy food

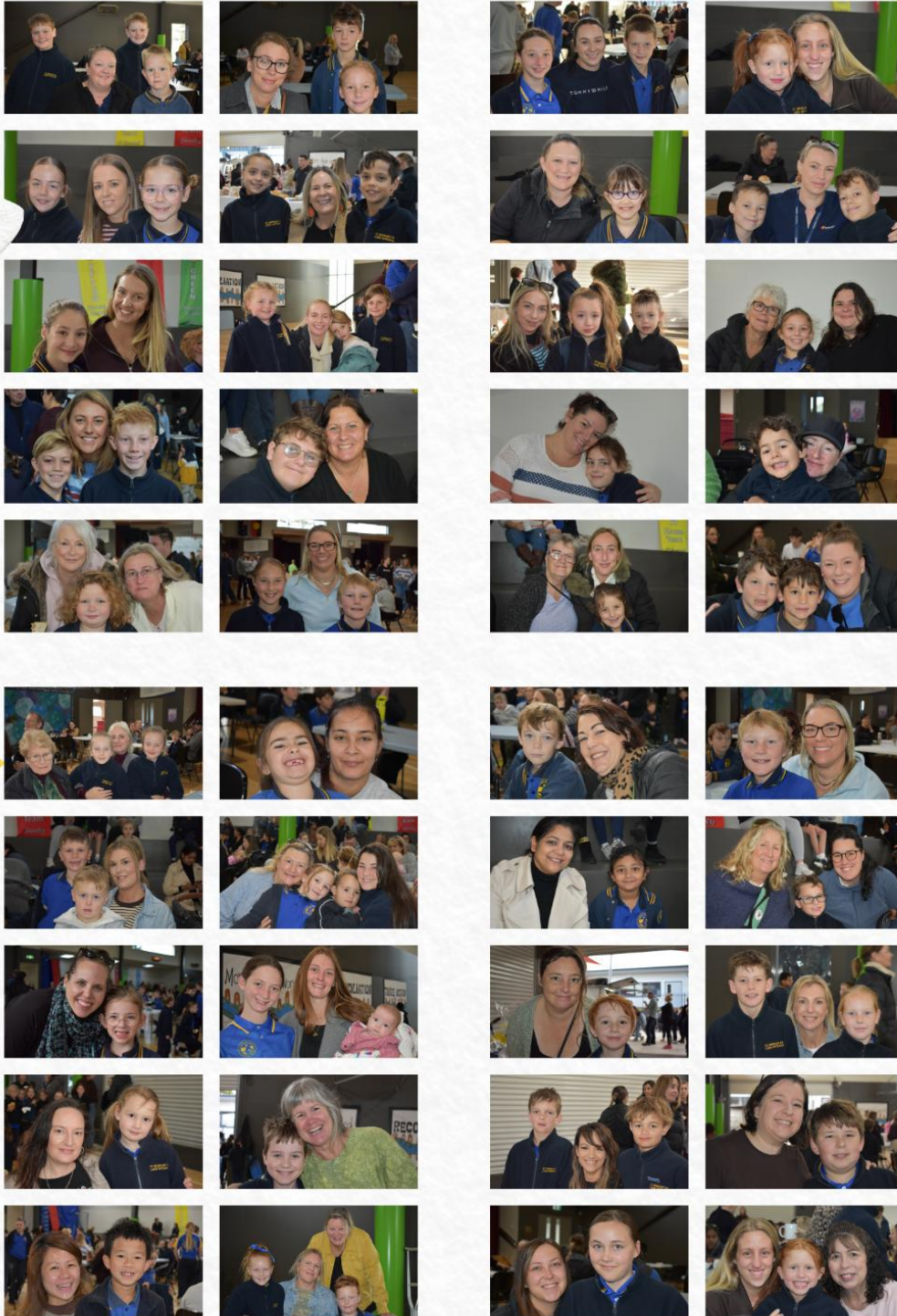


Foundation - Shep

Me and my mum on Mother's went to the farm and did work. At the Mother's day breakfast I ate lots of yummy food (mainly bacon) And we had fun!



♥ MOTHER'S DAY 2026 ♥



♥ MOTHER'S DAY 2026 ♥



MOTHER'S DAY 2026



MOTHER'S DAY STALL



On Tuesday and Wednesday last week, all of the students had a chance to buy your mum something nice from the Mother's day stall. Some of the things available were bath bombs, hats and coffee mugs. In all of the variety there was something for everyone, from skincare to gardening supplies. We want to thank Mrs Rickman for organising the gifts and the whole chance to make a fantastic Mother's day for our motherly figure in life and Miss Thompson for helping us make beautiful Mother's day cards. We also would like to thank all the parents and friends for running the stalls. This Mothers day would be one to remember!

By Summer Shields and Isla Strong



DIVISION

CROSS COUNTRY



On Tuesday 5th of May, 37 students from St Brendan's participated in Division cross country at Nagle Catholic College. It was a great experience. Years 3-6 participated in this event. To make it through to Regionals, you had to come in the top ten of your age group.

We had 4 students who made it through to Regionals. These students are: Ivy O'Donnell (Year 6), Shiloh Eiseman (Year 5), August Neal (Year 4) and Isla Strong (Year 6). It was a great day.

We would like to thank Mrs Morssion, Dan and Mrs Neal for taking us and supporting us on the day. Thank you also to Mr Hamer who ran cross country training at lunch time to help us prepare for the day.

By Jordan Morrison and Willow Watson



Last Tuesday, I went to Nagle to participate in the Division cross country. At the beginning I felt anxious about how good the other runners would be, but I remembered it's not about winning, it's about having fun and getting along with everyone.

When I ran the first lap it felt a little tired, but when I got to the second one which was the last it was way more exhausting. I didn't give up, I kept going.

I'm not sure what place I ended up coming in the end, maybe between 20 - 30th place.

Overall the experience was very exhausting but very fun.

By Jaxon Carter



Nagle College

VISIT



By Leanna and Bella

On the 7th of May, Year 6 and Year 5 had a visit from Nagle College. Two year sevens came, Noah Waite and Camilla Sanders and two teachers Mrs Trewin and Mrs Cox. We had a bunch of questions about transitioning into year 7. Even if we weren't going to Nagle it was definitely great information to know.

Some of the questions were about how many classes, how long to get from class, what our lockers and computers look like and lots more. There are 7 houses.

Mackilop (orange), Bosco (white), Chisholm (Maroon), Avila (Yellow), Newman (Red), Polding (Blue) and Xavier (Green).

Nagle Uniforms are changing next year so they won't look similar to Gippsland Grammar.

In Term One when you're in Year 7, teachers won't mind if you are a little late to class but when you are in Term 2 and you're late you get marked on you could possibly get a detention.

Thank you to Mrs Trewin and Mrs Cox for coming to our school and Noah and Camilla for helping with the Nagle Visit! Everyone is very informed about what to expect at Nagle.



By Ava Corrie and Aaliyah Dollman

YEAR 5 CLASS PRAYER

ST BRENDAN AND THE WHALE

St. Brendan, often referred to as Brendan the Navigator or Brendan the Voyager, is celebrated in Irish history for his wisdom and adventurous spirit. Born in the early 6th century, he became one of Ireland's most revered saints, particularly noted for his legendary sea voyages. According to the famous tale, "The Voyage of St. Brendan," he embarked on a remarkable journey across the Atlantic Ocean in search of the "Isle of the Blessed," a voyage that some believe might have led him to the shores of North America long before the Vikings or Columbus.



In the prayer, we danced and sang to the song 'In the Footsteps of Jesus'. The Year 5 students worked hard on learning the actions, and their hard work resulted in a wonderful performance for the prayer.

St. Brendan and the whale



Year 5 put a lot of hard work into performing a play about St Brendan and the whale. We showed the monks' journey across the ocean, their discovery of the "island," and the night they stayed there. The play also showed their surprise when they discovered the island was actually a whale.

After sailing for days without sight of land, an island suddenly came into view, with very little wood or grass upon it and no sand along the shore.

The monks spent the night in prayer outside the vessel, while St Brendan remained on the boat. The next morning, after the priests had celebrated Mass, the monks took out uncooked meat and fish and placed a cauldron over the fire to cook.

When the cauldron began to boil, "the island moved about like a wave." The monks rushed back to the boat, where St Brendan pulled them onboard. As he did so, the "island" lifted its great tail and swam off into the distance.

"Fear not, my children," said the saint, "for God revealed the mystery to me last night. It was not an island you were upon, but a fish — the largest of all that swim in the ocean. Its name is Jasconius."

ORIGAMI WHALE MAKING



After the prayer, the year 5's and their families gathered together to make origami whales. We made whales as a symbol of the story of St. Brendan.



We decorated the whales with eyes and mouths and then proudly showed them off to our friends. Everyone had fun.



The Victorian Premiers' Reading Challenge is now open and we're excited to be taking part!

All children from birth to Year 10 are welcome to join in.

This year's Challenge theme is 'Stories to discover. Stories to tell'. Stories can inspire and challenge us, and help us grow. They open our eyes to new worlds and new ways of thinking.

The number of books read can be varied for everyone's needs. Children from Foundation to Year 2 are encouraged to read or 'experience' 30 books with their parents and teachers. Children from Year 3 to Year 10 are challenged to read 15 books.

All children who complete the Challenge will receive a certificate of achievement signed by the Victorian Premier and former premiers.

To learn more about the Challenge, visit [Premiers' Reading Challenge | vic.gov.au](http://Premiers'ReadingChallenge|vic.gov.au)

The Premiers Reading Challenge has an online recording system which is intended for students to enter their books at home.

Happy reading!



Students wishing to participate, need to send Katrina an email at: kwykes@lakesent.catholic.edu.au They will then be emailed their username, password and details to access the online computer system.

A SPECIAL REPORT: Celebrating IDAHOBIT

We possess a profound ability to shape our children's attitudes and beliefs, embedding values of acceptance, inclusivity, and respect for all.

The International Day Against Homophobia, Biphobia, Intersexism, and Transphobia (IDAHOBIT), celebrated each year on May 17th, emphasises the critical need to educate children about diversity and inclusivity. Inaugurated in 2004 by the World Health Organization, this day is a global call to promote tolerance and combat discrimination against the LGBTQIA+ community.

Instilling respect and acceptance for people of all sexual orientations and gender identities in children is crucial. Celebrating IDAHOBIT helps families communicate a strong stance against discrimination, highlighting the importance of diversity and the damaging effects of stereotypes and biases. These prejudices often arise from the media, societal interactions, and peer influences, necessitating proactive efforts from parents and caregivers to counteract and discuss these issues.

Creating inclusive environments supports diversity and plays a vital role in raising awareness and demonstrating solidarity with LGBTQIA+ students and community members. It is a commitment to creating a world free from prejudice and discrimination, instilling values of empathy, respect and inclusivity.

This Special Report will help you fostering acceptance, empowering young people to become compassionate and informed advocates for equality.

We hope you take time to reflect on the information offered in this Special Report, and as always, we welcome your feedback.

If you do have any concerns about the wellbeing of your child, please contact the school for further information or seek medical or professional help.

Here is the link to your special report:

https://lakesent.catholic.schooltv.me/wellbeing_news/special-report-celebrating-idahobit-au



SPECIAL REPORT

Celebrating IDAHOBIT

May 17



WINTER UNIFORM

This is an important requirement and must be worn by every child each day. Your support in this matter is paramount to its effectiveness. We pride ourselves on our uniform and need the support of all families in ensuring that this policy is strictly adhered to. Generally summer uniform is worn in Terms One and Four and winter uniform is worn in Terms Two and Three. There is changeover period for uniforms at the beginning of Term Two and Term Four.

UNIFORM ITEMS - AVAILABLE FROM NICK'S IN BAIRNSDALE MOST ITEMS ARE REGULATION, MEANING THAT THE SCHOOL HAS DETERMINED THE STYLE OR MANUFACTURE.



BOYS WINTER UNIFORM		GIRLS WINTER UNIFORM
	Sky blue long/short sleeve shirt	Winter Tunic (Year F,1,2,3)
	Grey trousers	Winter Skirt (Year 4/5/6)
	Bomber Jacket (with emblem)	Blue long sleeve blouse
	Polar Fleece /Jacket (with emblem)	Bomber Jacket (with emblem)
	Grey socks - above ankle (no logos)	Polar Fleece Jacket (with emblem)
	Black leather school shoes/boots	Navy tights/white school socks – above ankle (no logos)
	Navy 'Midford' Pant	Navy 'Midford' Pant
	Black leather school shoes or buckle/lace-up/T-bar	Black leather school shoes or buckle/lace-up/T-bar

BOYS & GIRLS WINTER SPORTS UNIFORM

- Blue polo shirt with emblem (Short Sleeve)
- Navy track pants without logos
- Bomber Jacket / Polar Fleece Jacket (with emblem)
- White sports socks (above ankle) – below ankle footlet style not acceptable (no logos).
- Running shoes / sneakers (**not skate or fashion shoes**)



(BLACK SHORTS MAY BE WORN UNDER TRACKSUIT PANTS FOR SPORT AND OUTSIDE PLAY.)

UNIFORM REMINDER: STUDENTS ARE REQUIRED TO WEAR JUMPERS AND TRACKSUIT PANTS TO SCHOOL ON SPORTS UNIFORM DAYS. MANY STUDENTS ARE PRESENTING TO THE OFFICE IN THE MORNING, COLD, REQUESTING JUMPERS. PLEASE ENSURE YOUR CHILD BRINGS A JUMPER TO SCHOOL EACH DAY. THANK YOU.

HAIR - HAIR LONGER THAN COLLAR LENGTH, MUST BE TIED BACK COMPLETELY. THIS IS TO HELP RESTRICT THE SPREAD OF NITS AND LICE AND FOR STUDENT SAFETY. HEADBAND, HAIR TIES, RIBBONS, SCRUNCHIES AND CLIPS MUST BE BLUE, BLACK OR BROWN.

JEWELLERY - IS RESTRICTED TO THE FOLLOWING - A WRIST WATCH, NO MORE THAN ONE SMALL MATCHING PAIR OF STUDS OR SLEEPERS IN THE EAR LOBE - GOLD, SILVER OR GEMSTONE, A RELIGIOUS MEDALLION ON A CHAIN TO BE WORN UNDER CLOTHING. FASHION JEWELLERY, MAKE-UP AND NAIL POLISH ARE NOT PERMITTED.

FACT SHEET FOR PARENTS, GUARDIANS AND CARERS

WHAT IS THE NCCD?

The Nationally Consistent Collection of Data on School Students with Disability (NCCD) takes place every year.

The NCCD is a collection that counts:

- the number of school students receiving an adjustment or 'help' due to disability
- the level of adjustment they are receiving to access education on the same basis as other students.

Students are counted in the NCCD if they receive ongoing adjustments at school due to disability. This 'help' allows them to access education on the same basis as a child without disability. The NCCD uses the definition of disability in the *Disability Discrimination Act 1992*.

Schools provide this information to education authorities.

Go to *What is a reasonable adjustment?* below to learn about adjustments.

WHY IS THIS DATA BEING COLLECTED?

All schools in Australia must collect information about students with disability.

The NCCD:

- ensures that the information collected is transparent, consistent and reliable
- provides better information that improves understanding of students with disability
- allows parents, guardians, carers, teachers, principals, education authorities and government to better support students with disability.

Student with disability loading

Funding from the Australian Government for students with disability is based on the NCCD through the student with disability loading.

Students with disability who are counted in the top three levels of the NCCD (extensive, substantial and supplementary) attract the loading. Funding is based on a per-student amount at each of the three levels of additional support. The amount of the loading reflects the level of support students with disability need to participate fully in school, with higher funding for those who need higher levels of support.

Australian Government recurrent school funding is provided as a lump sum to school authorities including state and territory governments, which can then distribute the funding to their member schools according to their own needs-based arrangements.

The Government expects schools and school systems to consider their funding from all sources (ie Australian Government, state and territory and private) and prioritise their spending to meet the educational needs of all of their students, including students with disability.

WHAT ARE THE BENEFITS OF THE NCCD FOR STUDENTS?

The information collected by the NCCD helps teachers, principals, education authorities and governments to better support students with disability at school.

The NCCD encourages schools to review their learning and support systems and processes. This helps schools to continually improve education outcomes for all students.

WHAT MUST SCHOOLS DO FOR STUDENTS WITH DISABILITY?

All students have the right to a quality learning experience at school.

Students with disability must be able to take part in education without discrimination and on the same basis as other students. To ensure this, schools must make reasonable adjustments if needed for students with disability. Educators, students, parents, guardians, carers and others (eg health professionals) must work together to ensure that students with disability can take part in education.

The *Disability Discrimination Act 1992* and the *Disability Standards for Education 2005* describe schools' responsibilities.

WHAT IS A REASONABLE ADJUSTMENT?

An adjustment is an action to help a student with disability take part in education on the same basis as other students.

Adjustments can be made across the whole school (eg ramps into school buildings). They can be in the classroom (eg adapting teaching methods). They can also be for individual student need (eg providing personal care support).

The school assesses the needs of each student with disability. The school provides adjustments in consultation with the student and/or their parents, guardians and carers.

Schools must make reasonable adjustments if needed. The *Disability Standards for Education 2005* define 'reasonable adjustment' as an adjustment that balances the interests of all parties affected.

WHO IS INCLUDED IN THE NCCD?

The definition of disability for the NCCD is based on the broad definition under the *Disability Discrimination Act 1992*.

The following students are examples of those who may be included in the NCCD if they need monitoring and adjustments:

- students with learning difficulties (such as dyslexia)
- students with chronic health conditions (such as epilepsy or diabetes).

WHO COLLECTS INFORMATION FOR THE NCCD?

Schools identify which students will be counted in the NCCD. They base their decisions on the following:

- adjustments provided for the student (after consultation with the student and/or their parents, guardians and carers)
- the school team's observations and professional judgements
- any medical or other professional diagnoses
- other relevant information.

School principals must ensure that information for the NCCD is accurate.

WHAT INFORMATION IS COLLECTED?

A student is counted in the NCCD if they receive reasonable adjustments at school due to disability.

Each year, schools collect the following information about the student, including:

- their year of schooling
- the level of adjustment received
- the broad type of disability.

For students who have more than one disability, the school uses professional judgement to choose one category of disability. They choose the category that most affects the student's access to education and for which adjustments are being provided.

A high level summary of the NCCD data is available to all Australian state and territory governments to improve policies and programs for students with disability.

HOW IS THIS DATA USED?

The NCCD data informs funding and work by schools and sectors. It ensures that support for students with disability becomes routine in the day-to-day practice of schools. The NCCD also supports students in the following ways.

- The NCCD helps schools better understand their legislative obligations and the *Disability Standards for Education 2005*.
- Schools focus on the individual adjustments that support students with disability. This encourages them to reflect on students' needs and to better support students.
- The NCCD facilitates a collaborative and coordinated approach to supporting students with disability. It also encourages improvements in school documentation.
- The NCCD improves communication about students' needs between schools, parents, guardians, carers and the community.

The Australian Curriculum, Assessment and Reporting Authority (ACARA) annually publishes high-level, non-identifying NCCD data.

WHEN DOES THE NCCD TAKE PLACE?

The NCCD takes place in August each year.

IS THE NCCD COMPULSORY?

Yes. All schools must collect and submit information each year for the NCCD. This is detailed in the *Australian Education Regulation 2013*. For more information, ask your school principal or the relevant education authority.

HOW IS STUDENTS' PRIVACY PROTECTED?

Protecting the privacy and confidentiality of all students is an essential part of the NCCD.

Data is collected within each school. Personal details, such as student names or student identifiers, are not provided to federal education authorities. Learn more about privacy in the *Public Information Notice*.

FURTHER INFORMATION

Contact your school if you have questions about the NCCD. You can also visit the [NCCD Portal](#).

There is also a free e-learning resource about the *Disability Discrimination Act 1992* and *Disability Standards for Education 2005*.

This document must be attributed as *Fact sheet for parents, guardians and carers*.

SIMON Everywhere App



After you've setup your PAM account from your email:

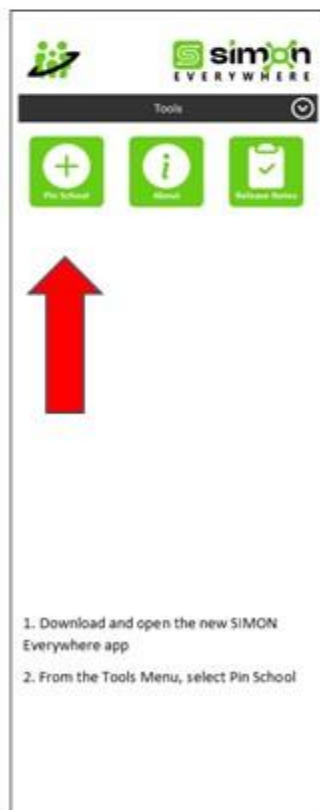
1. On a smart device, download the 'SIMON Everywhere' app
2. Open app and select 'Tools', 'Pin School' and enter the School Code
3. Select ' PAM Login'
4. Enter your username (full email address) and password
5. Tick 'Verify You Are Human' and Sign In
6. Check your assigned email for Multi-Factor Authentication Code, Enter code and press Continue
7. Click Home to view your PAM account.

Click on a student's name to view their individual profile

The school code was emailed to all users. It can also be found when logged into PAM and can be found when you click on your user icon. Please contact the office if you require assistance.



*This is not the school code.



Lunch orders are available on a Friday and are supplied by Mama Vu's Kitchen.

All orders will need to be in by Thursday morning - before 12pm for lunch on Friday

NO LATE ORDERS will be accepted.

Please make sure that all orders are on a brown paper lunch order bag with the correct money

Siblings will require one bag each

Name and class needs to be clearly stated on the bag

Please take note of prices.



SUSHI ROLLS		HOT FOOD	
Salmon & Avo	\$4	Fried Rice	\$7
Avocado	\$4	Fried Pork Gyoza (6pc)	\$7
Cucumber	\$4	Spring Rolls (4pc)	\$7
Tempura Vege	\$4	Chicken Hokkein Noodle	\$10
Teriyaki Chicken	\$4	Honey Chicken + Fried Rice	\$10
Chicken Katsu	\$4	Teriyaki Chicken + Fried Rice	\$10
Panko Prawn	\$4	Chicken Oyster Stir fry + Fried rice	\$10
Tuna & Avo	\$4	Grilled Pork Vermicelli Bowl	\$10
DRINKS		Grilled marinated pork served over vermicelli noodles with fresh herbs, pickled veg, peanuts, and a light Vietnamese nuoc cham dressing.	
Lightly Sparkling Mineral Water	\$3		
Lime, Raspberry, Watermelon, Mango,			



LUNCH ORDERS ARE AVAILABLE

ON A FRIDAY

ORDER MUST BE IN THURSDAY



Menu Location: PAM - Knowledge Banks: School Notes/Information & St Brendan's Website



HEAD LICE ALERT

PLEASE CHECK YOUR CHILD'S HAIR TONIGHT!!

TO CHECK

Check the scalp for insects or eggs. Use a fine-tooth comb on wet hair then comb through the hair in sections looking for eggs or lice, repeat over a few days.

TO TREAT

Wet the hair and scalp with conditioner or use chemical shampoo/ lotion (containing insecticide) - this will kill the lice and eggs. Using a fine metal comb, or special head lice comb you can get from a chemist, go through the hair in sections to comb the lice and eggs out.

Always re-treat 7-10 days after the first treatment, to kill any head lice that may have hatched from eggs that survived the first treatment.

TIPS

- ✓ Check and treat the hair every night
- ✓ Please tie up long hair for school
- ✓ If your child has head lice please check everyone in the family home
- ✓ Do not share hairbrushes, towels, hats/ scarves etc.



Uniform Reminders



Jewellery is restricted to the following – a wrist watch, no more than one small plain matching pair of studs or sleepers in the ear lobe – gold, silver or gemstone, a religious medallion on a chain to be worn under clothing. Fashion jewellery, make-up and nail polish are not permitted.

Hair is to be kept neat and tidy at all times. Hair longer than collar length, must be tied back completely. This is to help restrict the spread of nits and lice and for student safety. Headband, hair ties, ribbons, scrunchies and clips must be blue, black or brown.

It is not appropriate for children to come to school with dyed or inappropriate hair styles as deemed by the Principal.



NAGLE
CATHOLIC COLLEGE

Key Dates for Year 7 2027

Enrolments:

- **Applications are now open** (online via our [website](#))
- **25 March** – Discover Nagle: Year 7 2027 Information Evening
- **8 May** – Applications Close
- **June** – Enrolment Interviews (dates TBC)
- **27 July** – Offers of Placement made
- **01 December** – Orientation Day

Please note that the Department of Education Application for Year 7 Placement Form is not an application for enrolment at Nagle College.

Families wishing their child to be considered must complete the College's enrolment process.



LAKES ENTRANCE
PRIMARY SCHOOL COUNCIL
OSHC

Before & After School Care PROGRAM



5-12 YEARS OLD

Our OSHC is the ideal setting for students to explore new interests or establish lasting friendships, while also having a great time together!

- Homework Assistance
- Creative Art & Crafts
- Exciting Group Activities
- Snacks & Refreshments Provided

LEARN MORE:

(03) 5155 1812

oshc.lakes.entrance.ps@education.vic.gov.au



What is an **activity you really enjoy**?

How do you feel when you do this?



THE RESILIENCE PROJECT.



GOOD CLEAN FUN

[PLAY.AFL/AUSKICK](https://play.afl.com.au/auskick)

LAKES ENTRANCE AUSKICK CENTRE

LAKES ENTRANCE RECREATION RESERVE

FRIDAYS | 5:00PM - 6:00PM

Starting Friday 24th April 2026



ANYBUDDY CAN PLAY

[PLAY.AFL/SUPERKICK](https://play.afl.com.au/superkick)

LAKES ENTRANCE SUPERKICK

LAKES ENTRANCE RECREATION RESERVE

FRIDAYS | 5:00PM - 6:00PM

Starting Friday 24th April 2026



East Gippsland Aquatic Strategy



Help shape the future of aquatic facilities in East Gippsland

We're creating a new **Aquatic Strategy** and want to hear from you.

The strategy will consider:

- Current aquatic community needs and perspectives.
- Area growth and projected populations.
- Current condition of existing facilities.
- Costs of the service and facilities over the next 10 years.
- Infrastructure renewal, service improvement and strategic investment.
- Alignment with the Council Plan and sports facility planning priorities.

Community survey now open

Please scan the QR code to complete the survey and learn more or visit any of our recreation or service centres. Survey closes 29 May 2026.



<https://yoursay.eastgippsland.vic.gov.au/east-gippsland-aquatic-strategy>

Questions about the engagement and survey can be directed to @leisure Planners via email to info@atleisure.com.au



East Gippsland Shire Council
Phone 5163 9500
Email feedback@egipps.vic.gov.au
Web eastgippsland.vic.gov.au

CROSS COUNTRY SEASON



Join us for the 2026 Cross Country Season
2 FREE Trails are available.



SATURDAY'S
2ND MAY - 29TH AUGUST

**LAKES ENTRANCE
SECONDARY COLLEGE**

Start at
9:30AM

U6 - 500m
U7 & U8 - 1km
U9 & U10 - 1.5km
U11 & U12 - 2km
U13 & UP - 3km

*VENUE MAY CHANGE ON CERTAIN DATES

DISCOVER YOUR FUTURE!

@ LAKES ENTRANCE SECONDARY COLLEGE
YEAR 7 OPEN NIGHT

Discover your future at Lakes Entrance Secondary College Open Night. Meet our dedicated staff, explore our curriculum offerings and learn about the transition and enrolment process as you take the next step in your educational journey.

We warmly encourage all prospective 2027 Year 7 families to attend. Light refreshments will be provided.



Tuesday 19 May, 5-7 PM
in the Library



1-11 North Street, Lakes Entrance

Apex Club of Bairnsdale Time Capsule Celebration

Sealed 1975 • Opened 2001
Opening 2026 • Resealing for 2051!



Saturday 23rd May 2026

Opening 10:30am
Resealing 11:30am



Purchase your envelope now
& leave your mark in History!

ENVELOPES AVAILABLE FOR PURCHASE
\$5 AND \$10 OPTIONS - CASH ONLY
SCHOOLWORKS SUPPLIES
MACLEOD ST, BAIRNSDALE

Free BBQ lunch supplied by the
Apex Club of Bairnsdale

BRHS All funds raised supporting
BRHS Maternity ward



Enquiries: Bairnsdale@apex.org.au
<https://www.facebook.com/ApexBairnsdale>

TIME CAPSULE ONLINE ENVELOPE PURCHASE



Rhymetime

at your local library

Storytime

at your local library

Bairnsdale Library
Wednesday 10.30am

Lakes Entrance
Service Centre
Wednesday 11.00am

Orbost
Service Centre
Thursday 10.00am

Paynesville
Service Centre
Monday 10.30am

Mallacoota
Service Centre
Tuesday 10.00am



Bairnsdale Library
Tuesday 11.00am

Lakes Entrance
Service Centre
Tuesday 11.00am

Orbost Service Centre
Tuesday 10.30am

Paynesville Service Centre
Tuesday 11.00am

Mallacoota
Service Centre
Thursday 2.30pm



EAST GIPPSLAND
SHIRE LIBRARIES

EAST GIPPSLAND
SHIRE LIBRARIES

NEW!

East Gippsland Shire Council

KINDERGARTEN CENTRAL REGISTRATION SERVICE

Is your child attending a funded
3- or 4-year-old kindergarten in 2027?

From April 2026, families can register
for 3- or 4-year-old kindergarten through
Council's Central Registration Service



Contact the Early Years Team:

earlyyears@egipps.vic.gov.au

[03\) 5153 9500](tel:03)51539500)

Scan the QR Code



NEW!

East Gippsland Shire Council

KINDERGARTEN CENTRAL REGISTRATION SERVICE

The Central Registration Service ensures the process of registration and enrolment is simple, consistent, inclusive and equitable.

It provides a single point for families to register for multiple kindergarten services.

To allocate kindergarten places in line with the Department of Education's Priority of Access criteria.

First round offers open 1 April 2026 & close 30 June 2026. You can complete a pre-registration form at any time.

Scan the QR code or visit our website to complete an online registration form.

Register for kindergarten in 4 easy steps:

1. **Register**- Family completes an online form
2. **Allocate** - Council carefully reviews all registrations and allocates kindergarten places
3. **Confirm**- Families receive a kindergarten offer
4. **Enrol**- Families complete the child's enrolment directly with the kindergarten.



Contact the Early Years Team:

earlyyears@egipps.vic.gov.au

[03\) 5153 9500](tel:03)51539500)

Scan the QR Code

