

St Brendan's Primary School 1581

40 Golf Links Road, Lakes Entrance 3909
Ph: 03-51552712 Fax 03-51554565

Website : www.lakesent.catholic.edu.au
Email : principal@lakesent.catholic.edu.au
Internet Banking : BSB 083 879 A/C 695096861
Account Name : St Brendan's School

Newsletter No 27
September 5, 2025



We gather on Gunaikurnai Country. We pay our respects to their Elders; past, present and emerging.
We also acknowledge the ongoing living culture and connection to Country of all First Peoples.



Pyjama Day

FRIDAY, 12TH SEPTEMBER

Slide into Your Comfiest Cause Yet!
Get ready to cosy up for a cause!

Gippsland's Biggest PJ Day is back and St Brendan's is joining the fun.

By simply swapping your school uniform for sleepwear for the day, you'll be helping "A Better Life For Foster Kids" provide emergency care packs, essentials, and ongoing support to children who need it most.

- It's fun.
- It's feel-good.
- And it makes a real difference.



We kindly ask for you to bring a gold coin and if possible brand new toiletries items (toothbrush, toothpaste, shampoo, conditioner, soap, bodywash, etc)



Happy Father's Day to all our Dads, Step Dads, Uncles, Grandfather's or special family friends.

We hope you enjoyed our Father's Day Breakfast and enjoy your special day on Sunday.

HAPPY
Father's Day

Dear Families and Friends,

After a few weeks of influenza sweeping through the school we appear to be getting back on track. It certainly helps that the sun is shining and that days are getting longer.

I was away last week reviewing a school in Berwick/Cranbourne and I am very pleased to be back home. City traffic is not for me! I heard the foundation assembly item was a hit last Friday and the teachers were brimming with pride. When you speak to the students, they just love assemblies, which is a nice bit of feedback to us. Please make sure you get down when you can.

Thank you to all our mums who assisted in running the Fathers' Day gift stalls and the breakfast, it is a sign of a very health community. Thanks also to our staff who came early on Friday to facilitate the event. I hope all dads and grandads have a wonderful day on Sunday. Twenty-three degrees to look forward to.

Some food additives can cause reactions: <https://www.betterhealth.vic.gov.au/>

For most people, additives are not a problem in the short term. However, 50 of the 400 currently approved additives in Australia have been associated with adverse reactions in some people. Some food additives are more likely than others to cause reactions in sensitive people.

It is often the additives that are used to give a food a marketable quality, such as colour, that most commonly cause allergic reactions. Some of these hypersensitive reactions include:

- **Digestive disorders** – diarrhoea and colicky pains
- **Nervous disorders** – hyperactivity, insomnia and irritability
- **Respiratory problems** – asthma, rhinitis and sinusitis
- **Skin problems** – hives, itching, rashes and swelling.

It is important to realise that many of the symptoms experienced as a result of food sensitivities can be caused by other disorders. Medical diagnosis is important. If you try to diagnose yourself, you may restrict your diet unnecessarily and neglect an illness.



This week, we had Australian Rules Football clinics conducted by past student- Josh Dorling. The students had a wonderful time playing modified AFL games under the guidance of Josh. All other grades will have their clinics conducted next week.

Last night, we had four students attend the Lions Club Public Speaking competition and were supported by friends, family and members of staff. Ella O'Rourke, Elise Mahony, Willow Watson and Elan Jakobi represented our school with distinction and displayed great confidence..

Next Friday, we will have a pyjama day to raise money for fostered children. A great cause and an opportunity to celebrate Catholic Social Teaching, providing help to a local organisation. During the day we will also conduct our Science Afternoon. This is always a hit with students. Students get to take part in three short experiments that usually get a bit messy. One of the features is that our year six students conduct several of these lessons. The peer tutoring opportunity is a valuable step in their leadership.

Have a great weekend,

Matthew Hamer

		Up Coming Events
	SEPTEMBER	Term 3
	Sunday 7th	Father's Day
Week 8	Monday 8th	School Nurse visit - Foundation Division Athletics
	Tuesday 9th	School Nurse visit - Foundation
	Wednesday 10th	School Nurse visit - Foundation
	Thursday 11th	9.10am 4 and 4/5 Prayer
	Friday 12th	Pyjama Day 9.10am Foundation Mass 1.35pm Science Afternoon
Week 9	Friday 19th	The Big Picnic 9.10am GHC Assembly: Year 4/5 Red 2.15pm Term Ends
	OCTOBER	Term 4
Week 1	Monday 6th	9.00am Term 4 commences Swimming Lessons Foundation, Year 1, Year 2 & Year3
	Tuesday 7th	Swimming Lessons Foundation, Year 1, Year 2 & Year3
	Wednesday 8th	Swimming Lessons Foundation, Year 1, Year 2 & Year3
	Thursday 9th	Swimming Lessons Foundation, Year 1, Year 2 & Year3
	Friday 10th	Swimming Lessons Foundation, Year 1, Year 2 & Year3 District Summer Sports



UNIFORM REMINDER

STUDENTS ARE REQUIRED TO WEAR JUMPERS AND TRACKSUIT PANTS TO SCHOOL ON SPORTS UNIFORM DAYS AND LONG PANTS FOR DRESS UNIFORM DAYS. MANY STUDENTS ARE PRESENTING TO THE OFFICE IN THE MORNING, COLD, REQUESTING JUMPERS. PLEASE ENSURE YOUR CHILD BRINGS A JUMPER TO SCHOOL EACH DAY. THANK YOU.

Tues 9th Sept:	St. Brendan's	Lakes Entrance	9.30 am
Wed 10th Sept:	St. Colman's	Orbost	9.30 am
Fri 12th Sept:	St. Brendan's	Lakes Entrance	9.10 am
	Foundation Class Mass - All welcome.		
Sat 13th Sept:	St. Brendan's	Lakes Entrance	9.30 am
Sun 14th Sept:	St. Brendan's	Lakes Entrance	9.00 am
	St. Colman's	Orbost	11.00 am
	St. Peter's	Mallacoota	3.00 pm

EXPOSITION AND BENEDICTION: After Friday 9.30 am Mass.

ST. BRENDAN'S CHURCH, LAKES ENTRANCE will be open for:
PRIVATE PRAYER from 9am - 4pm Daily

EXPOSITION AND BENEDICTION: St. Brendan's: After 9.30 am Mass on Fridays

RECONCILIATION: Before Mass at Lakes Entrance, Swan Reach & Orbost or by arrangement.

ST. BRENDAN'S - ROSARY: 1st Saturday of the month 8.45am before Mass.
Next Rosary Morning **6th September 2025**

VISITATIONS: Please contact the Parish Office to request a home visit or to raise any other concerns in confidence. ph: 5155 5232 / 0468 840 349 or email stbrendan@bigpond.com

MORNING TEA Morning tea **Sunday 7th September for Father's Day** after Mass in Hobby Room.
All are most welcome.

PARISHES IN PARTNERSHIP



EASTERN BEACH CLEANUP



Written by Brock and Hudson

On Wednesday, the 20th of August 2025, Year 6 headed down to Eastern Beach with a lady from Tangaroa Blue called Anne-Marie.

Tangaroa Blue works with local communities to remove marine debris from the environment, and record what's found in their data base.

Anne-Marie taught us about the effects plastic pollution has on earth, and it was very interesting to learn about what plastic does to our beautiful planet and the effects on humans and marine life. We cleaned up 2 Kilometres of Eastern beach and found 60 pieces of plastic over the span of 1 hour and 15 minutes. We would like to thank Tangaroa Blue and Anne-Marie for teaching us about plastic and spending time cleaning it.

Did you know that plastic bottles take 450 years to decompose?

Did you know that fishing line takes 600 years to decompose?

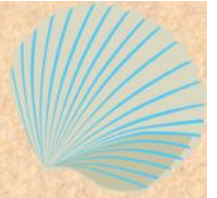
We are looking forward to continuing to learn more about plastic pollution throughout our Geography sessions and analysing the data from our collections on the day.

Thank you to Mrs Bromilow, Miss Witherow & Mel for organising the day!





EASTERN BEACH CLEANUP



WHAT CAN WE DO ABOUT MARINE DEBRIS?

- Bring reusable shopping bags to the supermarket.
- Use a stainless steel flask instead of plastic bottles.
- Reduce single-use plastics by using reusable items where possible.
- Put your litter in the bin. If the container is already overflowing, take it with you.
- Recycle as much as you can. Check with your local council what goes in the recycling bin.
- Pick up some rubbish when you go for a walk on the beach, in the park, in your neighbourhood or along waterways, or attend a beach clean





Lakes Entrance Beach Clean-up August 2025



36
Participants



1.25
Total Hours



9.1
Total Kilograms Removed



2216.72
Total Distance Covered



9L
Volume of debris removed



60
Total items removed

No.	Item Summary: Top Ten Items August 2025 Clean-up.	Total Items:
1	Miscellaneous paper, labels & tickets	9
2	Plastic bags supermarket, garbage, dog poo & ice	8
3	Hard plastic remnants	7
4	Rubber balloons, balls, toys, elastic straps & bands	5
5	Cigarette butts & filters	4
6	Plastic first aid materials & equipment (bandaids & bandages)	3
7	Foam insulation & packaging (whole and remnants)	3
8	Aluminium cans	2
9	Cloth, clothing, hats, and towels	2
10	Fishing line (recreational)	2

Tangaroa Blue Foundation would like to acknowledge the important contribution of St Brendan's Primary School as the on-ground volunteers contributing to this clean-up event.

Tangaroa Blue Foundation acknowledges the Traditional Custodians of the Lands and Sea Country on which we live and work. We pay our respects to their Elders, past and present, and acknowledge their continuous relationship to this land and the ongoing cultures of Aboriginal and Torres Strait Islander peoples across Australia.

Data Acknowledgement: Tangaroa Blue Foundation & the Australian Marine Debris (AMD) Database.
Data Enquiries: data@tangaroablue.org



YR 6 GEOGRAPHY

In Geography Yr 6 explored the global connections of ocean currents. We discovered that in all oceans there are a system of gyres or whirlpools. We mapped the directions of currents and labelled the known gyres that were also known ominously as garbage patches.



PLASTIC POLLUTION & OUR OCEANS

The idea of Garbage Patches in our beautiful oceans really revolted us. Why were they there and what can we do about it?

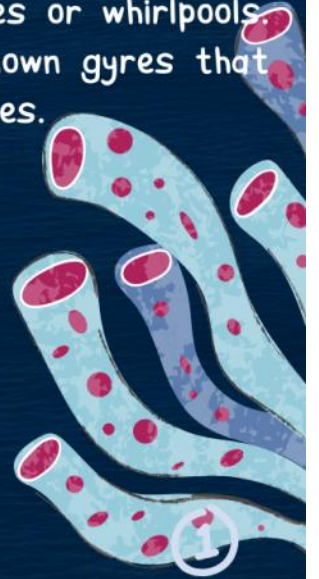
So...we explored when plastic was invented and how it was made. We realised that we were part of the problem.

Hey...but we are the next generation so what can we do to solve it??

FACE THE FACTS

Did you know that plastic bottles take 450 years to decompose?

Did you know that fishing line takes 600 years to decompose?



TANGAROA BLUE

That's when we connected with Tangaroa Blue. They are an organisation that tracks plastic pollution on a data base and uses this as evidence to lobby producers, governments and consumers to change their behaviours and hold us all accountable for the waste we produce.



OCEAN CURRENTS



Oceans

What do You Know About Oceans?

Have You Heard Of The Pacific Garbage Patch?

7 oceans

Many species of fish

Over sea travels

Good for marine life

Why are Oceans Important To Us And The Planet?

Water source for drinking & being clean

Allows the land and air to be moist

What Do You Know About How Water Moves In The Ocean?

Microplastics

There are currents / tides

Waves & different flow of water

Marine Debris

Marine Debris = Man made objects enter the ocean

Land

Wash

Dump

ships

boats

Natural disasters

Threat to sea life

Sea turtles at risk

Entangle can drown

Habitat is in danger

Eaten by marine life

Micro

Broken down plastic

Connections to cancer

it can enter the food chain

Single use

Plastic

Local clean beach

Shredded paper

spread word

Can't fix

Complex

GYRES & GARBAGE PATCHES



SAVE OUR OCEANS!

Protect Marine Life from Plastic Waste

Every year, 11 million metric tons of plastic enter our oceans, threatening the lives of fish and other poor creatures. Everyone can help make a difference by participating in clean-up events, and reducing plastic use. Help contribute to this world and help stop this crucial issue before it is too late.

OCEAN PROBLEMS

BY AMITY

THE BIGGEST PROBLEM FOR THE ENVIRONMENT AND CLIMATE CHANGES IS PLASTIC. IT IS EVERYWHERE! LIKE I BET IT'S IN YOUR HOUSE RIGHT NOW. DON'T BELIEVE ME? CHECK IT FOR YOURSELF.

YOU SEE, PLASTIC IS A GIANT REASON WHY WE CAN'T HAVE HEALTHY OR PRETTY OCEANS. RUBBISH IS CAUSING ALL SEA ANIMALS TO DIE ALL OVER THE WORLD AND I BET IT MAKES YOU SAD THAT YOUR FAVOURITE SEA ANIMAL IS DYING OVER THE THINGS THAT YOU'RE THROWING AWAY. LIKE ONE MIGHT BE DYING RIGHT HERE AS YOU'RE READING THIS.



Plastic Pollution

What do we use That's plastic

We use lots of things that are plastic like bags, bottles, toys and lots of other things. all of these things can end up in the ocean.

How can plastic harm the environment and marine life

When plastic ends up in the ocean marine life can eat it thinking that it is food. Also they can get tangled in the nets and plastic bags. It can harm the environment by clogging the drains and making the garbage patches even bigger.

PLASTIC POLLUTION IN OUR OCEAN!!!!

Today the biggest problem in our world and our oceans is plastic pollution.

Plastic pollution is quite hard to get rid of because once it is in our ocean it is nearly impossible to get out unless it washes up on our beaches. Rubbish can get into our ocean many different ways it can come from the producers, careless people dumping rubbish anywhere, rubbish coming overboard on ships or sailors dumping over the side.

The easiest way to remove rubbish is stopping it at the source.

Rubbish harms lots of animals by choking, poisoning and drowning and most of these lead to death. More than 1 million marine animals die each year. Rubbish can also harm us because large predators eat the animals who have digested rubbish then have the plastic in them and it gets into the food chain and we eat seafood. Humans eat microplastics and that can also be bad for our bodies.

So basically, we have to stop plastic at its source for everyone's well being



PLASTIC

What is plastic?

Plastic is a man-made material. Plastic can be very useful for HEAPS of things: Water bottles, toys, storage, fast food and more. Although being super useful, plastic is super harmful for the environment, and takes hundreds, even years to break down and fully dissolve and disappear.

How can plastic harm the environment?

Plastic most likely ends up in tips, water ways, marine settings and remote areas. Unable to be recycled, creatures can mistake it for food, causing risks of extinction. This is harmful for the earth and its creatures.

How does plastic get into the ocean?

There are various ways plastic ends up in the marine environment, but the most common is... us. Us humans play a huge part in it. Humans are lazy and they litter, dropping and throwing a plastic wherever is closest. Although some people take responsibility, research shows that 30% of Australians litter daily, wind most likely pushes the plastic into the oceans. Of course, there are other ways it can end up in our oceans, but us humans are the main villains.

What happens to plastic once it's in the ocean?

When plastic enters the waterways, there is almost no chance in retrieving it naturally. Plastic will slowly disintegrate into smaller pieces called "microplastics". These are smaller than your thumb, and very hard to see with the naked eye.

SAVE OUR OCEAN

LUCAS' ARTICLE:

THE PROBLEM OF PLASTICS

Plastic is a material made out of synthetic polymer. It can be used to make bottles, bowls and plates. It impacts human health, because fish eat the plastic, then humans eat the fish. Around 1 million fish die each year due to plastic pollution in the oceans.

After plastic gets into the ocean, it drifts along with currents, bringing it to some major ocean gyres, such as the North Pacific Gyre, the South Pacific Gyre, and more.

DID YOU KNOW?
11 TRILLION GRAMS OF PLASTIC GO IN THE OCEAN EACH YEAR! IMAGINE IF YOU WERE A FISH!



PLASTIC POLLUTION

What do we use that is plastic?

Bottles, containers, shopping bags and house hold items like cups and toys.

How can plastic harm the environment?

Polluting ecosystems, harming wild life and contributing to climate change.

What is the impact of plastic to marine life?

Entanglement, ingestion and chemical pollution

How much plastic ends up in our ocean?

Approximately 17million tonnes of plastic waste enters the ocean each year.

What is marine debris?

Marine debris is everything unnatural that is in the marine environment that is man made. It can be anything from plastic bottles and bags, old fishing equipment, and even shipwrecks. Most of the debris in our oceans is plastic. Plastic is light and durable so it can easily get tangled up with our animals. When This occurs because marine life can not swim, find food and sometimes can't breathe. Often they eat these plastics which makes them sick. Why don't we just remove the plastic from the water you say? Sadly it's not that simple. Microplastics are too small to see and the ocean is a huge place! Terribly enough, one garbage truck per minute enters our oceans. So far there is already 90 tons of plastic in the oceans. Plastic and marine debris poses a massive threat to earth's delicate ecosystems.

BY ELAN



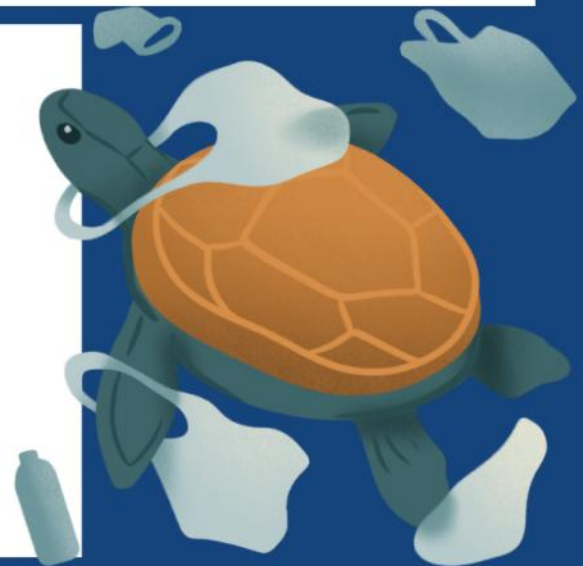
A Plastic Pollution

By Lacey Lee

Plastic pollution is changing society a lot in this century. And it's not just the factory workers or the Government's fault, it's our problem too. Us, the consumers of plastic, make a lot of bad decisions when it comes to plastic, we throw it on the ground or beach, don't recycle and leave rubbish in nature. It's not something we should be proud of, many animals and the environment have felt the most of the impact.

THE IMPACT

You may think the rubbish will eventually degrade after a few days but no, cardboard takes 2 months, cigarettes take 1-2 years, 6 pack rings take 400 years and the creepiest thing is scientists don't know how long a glass bottle takes to decompose! These rubbish go into animals and marine life's homes and they mistake it for food and end up dying. WWF states that its estimated 100,000 animals die from plastic each year!



Plastic Effects on People.

Plastic pollution doesn't just harm wildlife, it affects us too. Tiny plastic particles known as microplastics (less than 5mm in size) are now commonly found in oceans and waterways. Fish and other marine organisms ingest these particles, which then make their way into the human body through our food. Studies suggest that the average person consumes about 5 grams of plastic each week from the consumption of fish and other animals contaminated with microplastics, the equivalent of a credit card. Microplastics have even been found in human organs and are found to cause serious health concerns, including cancer, hormonal imbalances, and immune system issues.



Contribution to climate change

Plastic is made from petrol, and its production and disposal release significant amounts of greenhouse gases. Each year, plastic manufacturers emit roughly 1.9 billion tonnes of carbon dioxide (CO₂). When plastic is incinerated, it releases even more, about 6,330 kilograms of CO₂ per tonne. If current actions continue, plastic related emissions could make up 15% of the world's total carbon output by 2050

BY LEON



SPECIAL REPORT:

Celebrating Father's Day



Over the centuries, the role of fathers has evolved. During the industrial revolution, fathers were more detached, spending long hours working in factories, whilst mothers took on the role of primary socialiser and educator of children. Men tended to show their love and devotion from a distance, choosing to leave the child rearing to their wives.

Today things have changed dramatically with many Dads being celebrated for being sensitive, caring and more hands-on. Research has shown that the amount of time fathers are now spending teaching, helping and playing with their children, has trebled. This has transformed our understanding of how fathers shape their children's lives from the start, challenging conventional ideas of parenthood and gender.

Fathers who involve themselves in physical activity with their children, play a key role in influencing them to learn self-control, face challenges, regulate emotions and take manageable risks. However, to be a great Dad, you need to also indulge in a little self-care and look after your own mental health. This allows you to be more responsive to your child's needs, and engage more readily in play and learning activities.

If you are a Dad and struggling a little bit, it is advisable to seek help from a medical professional. Or, if you just want to talk to someone who understands, you can call one of the following organisations.

In Australia, phone **MensLine** on **1300 78 99 78** or **Beyond Blue** on **1300 22 46 36**.

In New Zealand, contact **Healthline** on **0800 611 116** or **Man Alive** on **0800 826 367**.



Celebrating
FATHER'S DAY



When picking up and dropping off your child we ask all parents to observe the following procedures at St Brendan's CPS.

Collecting Students from School Grounds – Child Safety As you would understand, child safety is the number one priority for schools. As circumstances evolve, we want to ensure we have the best possible practice in place. Please note the following requirements for collecting students at the end of the day.

Collecting from the church gate –
Students in years Foundation, One and Two will remain with their class teacher at the end of the day just outside their classroom. The church gates will be open at 3.15pm, at which time parents are required to enter the school grounds to collect their children from the class teachers. This action is in place to avoid situations where students leave the school grounds and run into the church gate car park area without an adult being present.

Please use the appropriate car park entry and exit. Please do not drive across the footpath to enter or exit the car park. We have students and other pedestrians using the footpath.

Collecting from the administration office
Please enter the gates and collect your child from the junior classroom area or your child from years Three to Six may meet you just inside the gates. Students are not to leave the grounds and cross the car park area without an adult walking with them. If dropping students off in the morning, you must also walk them into school. Please do not use the disabled parking bay without permission to do so.

Collecting from car line
Typically, St Brendan's staff are there to organise students into cars at the end of the day. If you wish to park and collect your child, please use the crosswalk and an adult must walk with their child/ren. Drop off at the beginning of the day should take place at the bus stop area.

Thank you for your assistance in this matter.

Regards,
Matthew Hamer
Principal

Thanks for buying
books from

SCHOLASTIC

Book Clubs

they help build our
classroom resources

St Brendan's Op Shop has second hand school uniform available.

St Brendan's School uniform available \$3.00 per item unless otherwise marked.

Open 10am-3pm Tuesday, Wednesday & Thursday.



\$ Seesaw

Keeps everyone in the learning loop



Who is someone you **feel**
really grateful for today?

Tell us why.



THE RESILIENCE PROJECT.

THE RESILIENCE PROJECT.

Parent & Carer Hub

When supporting your children's mental health,
we know the best outcomes happen when we
work together and **practise**.

Head over to our **Parent & Carer Hub** to learn
more about the **evidence-based strategies** being
taught in the classroom, so you can enhance
their impact at home. You'll find activities you can
practice to support your family's wellbeing.



Scan this QR code to learn more
about our **Parent & Carer Hub**.



To learn more about The Resilience project, head to:

The Resilience Project The Resilience Project theresilienceproject.com.au

School Crossing Assessment

Council have been asked to conduct a school crossing inspection on behalf of the "Department of Transport" Victoria. This inspection will be completed at a random date during term 3 or 4 at morning drop off and afternoon pickup. During these inspections, Council officers will be required to take photos and measurements of existing school crossings and road infrastructure. There will be no facial recognition in any of these photos as all faces will be blurred out.



Walk to School!

This October we're joining VicHealth's Walk to School with a local twist: "Park and Walk" 🚶

Walking helps kids feel energised, healthy, and ready to learn, while keeping school zones safer ❤️

Families can park at the Aquadome carpark, and enjoy a short walk to school. Because Part Way is OK!

Keep an eye out for your child's fun "Park and Walk" activity booklet coming soon! 📖

#WalktoSchool #ParkandWalk #PartWaysOK



Save the Date

We're celebrating our 50th birthday and we want you there!

Saturday 11 October 2025

11.00 – 3.30pm

GLCH, 18–26 Jemmeson Street, Lakes Entrance

Join us for a free, family-friendly celebration featuring live music, roving performances, a community footpath art project, local food stalls, and giveaways.

Put the date in your calendar now – it's going to be great!

50 Years | Thousands of Stories | Locals
Taking Care of Locals Since 1975





the saltwater creative co
ART & CERAMICS STUDIO

SPRING HOLIDAY PROGRAM 2025

www.thesaltwaterstudio.com
88 Marine Parade, Lakes Entrance, VIC
hello@thesaltwaterstudio.com 0438 762 362



SPRING HOLIDAY PROGRAM 2025

For your little tribe we have tailored NEW range of our best Saltwater creative workshops to young requirements to keep them busy over the holiday break. Ages 5-15. 1.5 hour art classes with skilled tutors. All art supplies included.

Kids Clay - Monster making

Tuesday 23rd @ 10:30am-12:00pm

Make your very own monster this spring holidays! We're going to learn simple hand building clay techniques to create something totally out of the ordinary!
\$60.00pp

Kids Pottery Wheel Throwing - Intro to the basics

Wednesday 24th @ 10:30am-12pm

Thursday 2nd @ 10:30pm-12:00pm

Kids get to step up to the potters wheel and learn all the basics.
\$65.00pp

Mask decoration

Tuesday 30th @ 10:30am-12:00pm

We are bringing this unique activity back from the dead. Be as creative and out there as you possibly can! \$60.00pp

Textured art workshop for all ages

Wednesday @ 10:30am - 12pm

&

Tuesday 1pm @ 1pm-2:30pm

We LOVE getting artsy and this workshop is exactly about that! We take you or/and your little artist through shapes and techniques to create their unique masterpiece of textured art.
\$60.00pp

Kids Acrylic Smash Balloon Painting Session

Thursday 25th @ 1pm - 2:30pm

Using fluid art technique and balloon smashing to create up to three beautiful & bright artworks!
\$50.00pp

Please note depending on the weather you might need to leave the pieces in the studio to dry for 24h.

Please note clay pieces will take 3-4 weeks to be ready.

visit our website for more details or contact us via the details below.

www.thesaltwaterstudio.com
24 Barkes Avenue, Lakes Entrance, VIC
hello@thesaltwaterstudio.com 0438 762 362

the saltwater creative co
ART & CERAMICS STUDIO

HOLIDAY *intensive* SWIM PROGRAM

**FAST TRACK
YOUR CHILD'S
SWIMMING
ABILITY!**

**Monday 29 September - Friday 3
October 2025**

Cost: \$60
On confirmation of booking a \$20 deposit will be required to secure your child's spot.

**Enrolments due
Friday 26 September**

**DAILY 30 MINUTE
LESSONS OVER 5
DAYS!**



ENROL ONLINE OR
SCAN THE QR CODE




43 Palmers Road, Lakes Entrance
P (03) 5155 3333
www.lakesaquadome.com.au



SCHOOL HOLIDAY SHOWS

The Velveteen Rabbit

**Tuesday 30 Sept
11.00am and 6.00pm**

A playful and poetic
reimagining of the
classic tale



Polite Mammals

**Friday 3 Oct 11.00am
and Saturday 4 Oct 6.00pm**

A wacky and delightful
variety show about animals



The Forge Theatre, 80 McKean Street, Bairnsdale

www.eastgippsland.vic.gov.au/leisure/whats-on-and-buy-tickets

Lunch orders are available on a Friday and are supplied by Mamma Vu's Kitchen.

- All orders will need to be in by **Thursday morning - before 12pm** for lunch on Friday
- **NO LATE ORDERS** will be accepted.
- Please make sure that all orders are on a brown paper lunch order bag with the correct money
- Siblings will require one bag each
- Name and class needs to be clearly stated on the bag

Please see below menu and please take note of prices.

Example :

Name _____
Class _____
1 Tuna & Avo sushi roll \$4.00
1 Raspberry drink \$3.00
Total \$7.00
Thank you

Lunch Order



ST BRENDAN'S STUDENT LUNCH ORDER

SUSHI ROLLS

Salmon & Avo	\$4
Avocado	\$4
Cucumber	\$4
Tempura Veggie	\$4
Teriyaki Chicken	\$4
Chicken Katsu	\$4
Panko Prawns	\$4
Tuna & Avo	\$4

HOT FOOD

Fried Rice	\$7
Fried Pork Gyoza (Rice)	\$7
Spring Rolls (4pc)	\$7
Chicken Hokkaido Noodle	\$10
Honey Chicken + Fried Rice	\$10
Teriyaki Chicken + Fried Rice	\$10
Chicken Oyster Stir Fry + Fried rice	\$10

DRINKS

Lightly Sparkling Mineral Water	\$3
Lime, Raspberry Watermelon, Mango	

LUNCH ORDERS ARE AVAILABLE ON A FRIDAY

Order must be in Thursday

MANY YUMMY OPTIONS!

ADULT BRONZE

11TH & 12TH OCTOBER

WEEKLY SESSION

Assessment day

Saturday 8th November



Learn new skills



Help and encourage the nipper

For more information contact:

pippi_lee@hotmail.com or

jessica.woodward96@gmail.com

PLAY JUNIOR CRICKET

AT LAKES ENTRANCE CRICKET CLUB!

REGISTER NOW

**UNDER 13
COMPETITION**

[AGES 9-13]

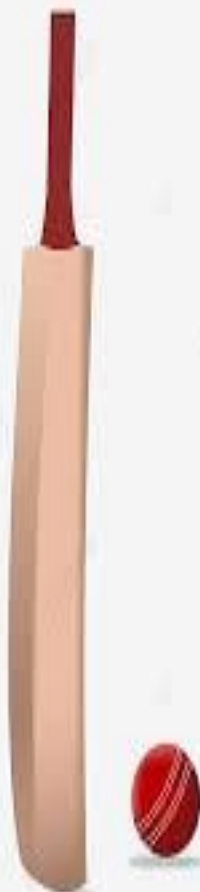


**WOOLWORTHS
CRICKET BLAST**

[AGES 5-9]



Any queries to 0417 712 269 / lakescc@outlook.com



FREE | BOOKINGS NOT REQUIRED
AGES 5 - 12

**EAST GIPPSLAND
SHIRE LIBRARIES**

LEGO Club 2025



**Junior LEGO enthusiasts are
invited to attend our after-school
LEGO Club sessions**

Head into your local library and flex your
creative muscles making the LEGO builds
of your dreams!

Donations welcome: the library will gladly
accept donations of old or new LEGO
brand pieces for our LEGO Club collection.

This is an unsupervised event - attendees
must be accompanied by an adult.

Bairnsdale Library
Tuesdays
4.00 pm - 5.00 pm

**Lakes Entrance
Service Centre**
Wednesdays
3.30 pm - 4.30 pm

**Orbost
Service Centre**
Mondays
3.30 pm - 4.30 pm

**Paynesville
Service Centre**
Wednesdays
3.30 pm - 4.30 pm

**Omeo
Service Centre**
Wednesdays
3.30 pm - 4.30 pm

**Mallacoota
Service Centre**
Wednesdays
3.30 pm - 4.30 pm



**SCHOOL
HOLIDAYS
SORTED**

LUCKNOW REC RESERVE
THURSDAY OCTOBER 2ND
9AM - 3PM
AGES 5-12

