

St Brendan's Primary School 1581

40 Golf Links Road, Lakes Entrance 3909
Ph: 03-51552712 Fax 03-51554565

Website : www.lakesent.catholic.edu.au
Email : principal@lakesent.catholic.edu.au
Internet Banking : BSB 083 879 A/C 695096861
Account Name : St Brendan's School

Newsletter No 19
June 27, 2025



We gather on Gunaikurnai Country. We pay our respects to their Elders; past, present and emerging.
We also acknowledge the ongoing living culture and connection to Country of all First Peoples.



WE ARE EXCITED TO LET YOU KNOW ABOUT OUR FUN END OF TERM EVENT! ON FRIDAY, 4TH JULY WE WILL BE HOLDING A CLASS COLOUR QUEST DAY, WHERE EACH CLASS AND THEIR CLASSROOM TEACHERS/ESOS WILL DRESS UP IN A COLOUR ASSIGNED TO THEM. WE ASK THAT STUDENTS COME TO SCHOOL DRESSED IN THIS COLOUR FOR THE DAY - GET CREATIVE WITH CLOTHES, HATS, ACCESSORIES AND FUN EXTRAS IF YOU LIKE!

FOUNDATION - YELLOW

YEAR 1 - GREEN

YEAR 2 - RED

YEAR 3 - PINK

YEAR 4 - BLUE

YEAR 5 - PURPLE

YEAR 6 - ORANGE

SPECIALIST/ADMIN STAFF - RAINBOW

CLASS COLOUR QUEST

FRIDAY, 4TH JULY

As part of the day, students will also take part in a class scavenger hunt around the school.

It will be a great opportunity for teamwork, problem-solving, and a little bit of friendly competition!

We look forward to a colourful and exciting day together!

AUSTRALIAN MATHEMATICS COMPETITION

Tuesday, 5th August 2025

Students in Years 3 to 6 are invited to participate in this internationally recognised competition.

If you would like your child to participate, please RSVP by Monday, 30th June 2025.

On Friday, 4th July school finishes at 2.15pm to begin the Holidays.

Year 6 Melbourne Camp

Reminder to be at school before **7.15am**
Bus Departs at **7.30pm**

Don't forget to pack your lunch for Day 1

THIS TIME FITS IN LINE WITH THE BUS TIMETABLES.

		Up Coming Events
		Term 2
	JUNE 2025	
Week 11	Monday 30th	Year 6 Melbourne Camp
	JULY 2025	
	Tuesday 1st	Year 6 Melbourne Camp
	Wednesday 2nd	Year 6 Melbourne Camp
	Thursday 3rd	3.30pm Confirmation Parent Workshop
	Friday 4th	CLASS COLOUR QUEST 9.10am GHC Assembly: Year 3 Blue 2.15pm Term 2 Ends
		Term 3
Week 1	Monday 21st	9.00am Term 3 commences
	Thursday 24th	State Cross Country
Week 2	AUGUST 2025	
	Friday 1st	2.30pm Assembly—School Captains
	Sunday 3rd	Confirmation Commitment Mass
Week 3	Monday 4th	Year 5 Sovereign Hill Camp
	Tuesday 5th	Year 5 Sovereign Hill Camp Australian Maths Competition
	Wednesday 6th	Year 5 Sovereign Hill Camp
	Thursday 7th	Curriculum Days - Student Free Days 3.30pm Confirmation Parent/Child Workshop
	Friday 8th	Curriculum Days - Student Free Days
Week 4	Monday 11th	9.10am Whole School Prayer: Mary Makillop
	Thursday 14th	Eastern District Athletics
	Friday 15th	9.10am Year 3 & 3/4 Mass 2.30pm Assembly: Year 5 Blue



			
Tues 1st July:	St. Brendan's	Lakes Entrance	9.30 am
Wed 2nd July:	St. Colman's	Orbost	9.30 am
Thurs 3rd July:	Opal	Lakes Entrance	11.00 am
Fri 4th July:	St. Brendan's Calvary	Lakes Entrance Lakes Entrance	9.30 am 11.00 am
Sat 5th July:	Rosary St. Brendan's St. Joseph's	Lakes Entrance Lakes Entrance Swan Reach	8.45 am 9.30 am 5.00 pm
Sun 6th July:	St. Brendan's St. Colman's	Lakes Entrance Orbost	9.00 am 11.00 am



MOVIE FUNDRAISER

By Shaaurya and Hudson Williams

On the 18th - 20th of June we all had a Movie Day at recess and lunch to raise money for the Royal Flying Doctor Service which was organised by the year 6 Events Leaders, Mel Rickman and Miss Witherow. The movies were: Zog and the Flying Doctors, The Highway Rat and The Snail and the Whale. All the classes from Foundation to Year Six had a bag of popcorn and had a choice to bring their drink bottles. The Foundations and Year Ones watched Zog and the Flying Doctors, Year 2 to Year 3 watched The Highway Rat, Year 4 to Year 5 watched The Snail and the Whale and Year 6 could pick any movies, so we picked The Highway Rat.



Come along to a Parent & Carer Presentation!



Building Resilience at Home Webinar

WHO'S INVITED?

Parents & Carers

DURATION

60 minutes

WHERE?

Online Webinar

ABOUT THIS WORKSHOP

A whole school approach is key to supporting student wellbeing. This session is designed to **connect the classroom to home**, providing a consistency and common language for your child and family.

This presentation will promote positive wellbeing and will provide you with:



A knowledge of the TRP program and how it is run in your child's school.



Tips and strategies to support your child's wellbeing at home through the GEM principles.



Ideas on how to support your own personal wellbeing.

SCAN FOR MORE ABOUT
THE RESILIENCE PROJECT™



Register at: https://forms.theresilienceproject.com.au/single-event-confirmation/?event_id=419222

A SPECIAL REPORT: Celebrating NAIDOC Week

NAIDOC week celebrates the history, culture and achievements of Aboriginal and Torres Strait Islander people. It is celebrated by all Australians and is a great opportunity to recognise and learn more about the history and culture of Indigenous communities.

NAIDOC stands for National Aborigines and Islanders Day Observance Committee. Its origins can be traced back to the Aboriginal rights movement, when on Australia Day 1938, protestors marched through the streets of Sydney to highlight the status and treatment of Aboriginal and Torres Strait Islander Australians. Today, it is a week-long celebration held in July that consists of range of traditional and contemporary activities.

NAIDOC Week is an important event that helps build positive relationships between Aboriginal and non-Aboriginal people. It enables a deeper understanding of our differences and similarities and is a great opportunity for all Australians to eliminate bias and discrimination by reflecting and reconciling the wrongs of the past to facilitate hope and build a fairer future. Families are encouraged to join in and support young people in learning the significance of NAIDOC Week.

This Special Report offers suggestions on how families can celebrate NAIDOC Week together. We hope you take a moment to reflect on the information offered, and as always, we welcome your feedback. If this raises any concerns for you, a loved one or the wellbeing of your child, please seek medical or professional help.

We hope you take time to reflect on the information offered in this Special Report, and as always, we welcome your feedback.

If you do have any concerns about the wellbeing of your child, please contact the school for further information or seek medical or professional help.

Here is the link to your special report:

https://lakesent.catholic.schooltv.me/wellbeing_news/special-report-celebrating-naidoc-week



SPECIAL REPORT

**Celebrating
NAIDOC
Week**



FACT SHEET FOR PARENTS, GUARDIANS AND CARERS

WHAT IS THE NCCD?

The Nationally Consistent Collection of Data on School Students with Disability (NCCD) takes place every year.

The NCCD is a collection that counts:

- the number of school students receiving an adjustment or 'help' due to disability
- the level of adjustment they are receiving to access education on the same basis as other students.

Students are counted in the NCCD if they receive ongoing adjustments at school due to disability. This 'help' allows them to access education on the same basis as a child without disability. The NCCD uses the definition of disability in the *Disability Discrimination Act 1992*.

Schools provide this information to education authorities.

Go to *What is a reasonable adjustment?* below to learn about adjustments.

WHY IS THIS DATA BEING COLLECTED?

All schools in Australia must collect information about students with disability.

The NCCD:

- ensures that the information collected is transparent, consistent and reliable
- provides better information that improves understanding of students with disability
- allows parents, guardians, carers, teachers, principals, education authorities and government to better support students with disability.

Student with disability loading

Funding from the Australian Government for students with disability is based on the NCCD through the student with disability loading.

Students with disability who are counted in the top three levels of the NCCD (extensive, substantial and supplementary) attract the loading. Funding is based on a per-student amount at each of the three levels of additional support. The amount of the loading reflects the level of support students with disability need to participate fully in school, with higher funding for those who need higher levels of support.

Australian Government recurrent school funding is provided as a lump sum to school authorities including state and territory governments, which can then distribute the funding to their member schools according to their own needs-based arrangements.

The Government expects schools and school systems to consider their funding from all sources (ie Australian Government, state and territory and private) and prioritise their spending to meet the educational needs of all of their students, including students with disability.

WHAT ARE THE BENEFITS OF THE NCCD FOR STUDENTS?

The information collected by the NCCD helps teachers, principals, education authorities and governments to better support students with disability at school.

The NCCD encourages schools to review their learning and support systems and processes. This helps schools to continually improve education outcomes for all students.

WHAT MUST SCHOOLS DO FOR STUDENTS WITH DISABILITY?

All students have the right to a quality learning experience at school.

Students with disability must be able to take part in education without discrimination and on the same basis as other students. To ensure this, schools must make reasonable adjustments if needed for students with disability. Educators, students, parents, guardians, carers and others (eg health professionals) must work together to ensure that students with disability can take part in education.

The *Disability Discrimination Act 1992* and the *Disability Standards for Education 2005* describe schools' responsibilities.

WHAT IS A REASONABLE ADJUSTMENT?

An adjustment is an action to help a student with disability take part in education on the same basis as other students.

Adjustments can be made across the whole school (eg ramps into school buildings). They can be in the classroom (eg adapting teaching methods). They can also be for individual student need (eg providing personal care support).

The school assesses the needs of each student with disability. The school provides adjustments in consultation with the student and/or their parents, guardians and carers.

Schools must make reasonable adjustments if needed. The *Disability Standards for Education 2005* define 'reasonable adjustment' as an adjustment that balances the interests of all parties affected.

WHO IS INCLUDED IN THE NCCD?

The definition of disability for the NCCD is based on the broad definition under the *Disability Discrimination Act 1992*.

The following students are examples of those who may be included in the NCCD if they need monitoring and adjustments:

- students with learning difficulties (such as dyslexia)
- students with chronic health conditions (such as epilepsy or diabetes).

WHO COLLECTS INFORMATION FOR THE NCCD?

Schools identify which students will be counted in the NCCD. They base their decisions on the following:

- adjustments provided for the student (after consultation with the student and/or their parents, guardians and carers)
- the school team's observations and professional judgements
- any medical or other professional diagnoses
- other relevant information.

School principals must ensure that information for the NCCD is accurate.

WHAT INFORMATION IS COLLECTED?

A student is counted in the NCCD if they receive reasonable adjustments at school due to disability.

Each year, schools collect the following information about the student, including:

- their year of schooling
- the level of adjustment received
- the broad type of disability.

For students who have more than one disability, the school uses professional judgement to choose one category of disability. They choose the category that most affects the student's access to education and for which adjustments are being provided.

A high level summary of the NCCD data is available to all Australian state and territory governments to improve policies and programs for students with disability.

Supported by the Australian Government Department of Education and Training. © 2019 Education Services Australia Ltd, unless otherwise indicated. Creative Commons BY 4.0, unless otherwise indicated.



Supported by the Australian Government Department of Education and Training. © 2019 Education Services Australia Ltd, unless otherwise indicated. Creative Commons BY 4.0, unless otherwise indicated.



HOW IS THIS DATA USED?

The NCCD data informs funding and work by schools and sectors. It ensures that support for students with disability becomes routine in the day-to-day practice of schools. The NCCD also supports students in the following ways.

- The NCCD helps schools better understand their legislative obligations and the *Disability Standards for Education 2005*.
- Schools focus on the individual adjustments that support students with disability. This encourages them to reflect on students' needs and to better support students.
- The NCCD facilitates a collaborative and coordinated approach to supporting students with disability. It also encourages improvements in school documentation.
- The NCCD improves communication about students' needs between schools, parents, guardians, carers and the community.

The Australian Curriculum, Assessment and Reporting Authority (ACARA) annually publishes high-level, non-identifying NCCD data.

WHEN DOES THE NCCD TAKE PLACE?

The NCCD takes place in August each year.

IS THE NCCD COMPULSORY?

Yes. All schools must collect and submit information each year for the NCCD. This is detailed in the *Australian Education Regulation 2013*. For more information, ask your school principal or the relevant education authority.

HOW IS STUDENTS' PRIVACY PROTECTED?

Protecting the privacy and confidentiality of all students is an essential part of the NCCD.

Data is collected within each school. Personal details, such as student names or student identifiers, are not provided to federal education authorities. Learn more about privacy in the Public information notice.

FURTHER INFORMATION

Contact your school if you have questions about the NCCD. You can also visit the NCCD Portal.

There is also a free e-learning resource about the *Disability Discrimination Act 1992* and *Disability Standards for Education 2005*.

This document must be attributed as *Fact sheet for parents, guardians and carers*.

Supported by the Australian Government Department of Education and Training. © 2019 Education Services Australia Ltd, unless otherwise indicated. Creative Commons BY 4.0, unless otherwise indicated.





When picking up and dropping off your child we ask all parents to observe the following procedures at St Brendan's CPS.

Collecting Students from School Grounds – Child Safety As you would understand, child safety is the number one priority for schools. As circumstances evolve, we want to ensure we have the best possible practice in place. Please note the following requirements for collecting students at the end of the day.

Collecting from the church gate –
Students in years Foundation, One and Two will remain with their class teacher at the end of the day just outside their classroom. The church gates will be open at 3.15pm, at which time parents are required to enter the school grounds to collect their children from the class teachers. This action is in place to avoid situations where students leave the school grounds and run into the church gate car park area without an adult being present.

Please use the appropriate car park entry and exit. Please do not drive across the footpath to enter or exit the car park. We have students and other pedestrians using the footpath.

Collecting from the administration office
Please enter the gates and collect your child from the junior classroom area or your child from years Three to Six may meet you just inside the gates. Students are not to leave the grounds and cross the car park area without an adult walking with them. If dropping students off in the morning, you must also walk them into school. Please do not use the disabled parking bay without permission to do so.

Collecting from car line
Typically, St Brendan's staff are there to organise students into cars at the end of the day. If you wish to park and collect your child, please use the crosswalk and an adult must walk with their child/ren. Drop off at the beginning of the day should take place at the bus stop area.

Thank you for your assistance in this matter.

Regards,
Matthew Hamer
Principal

Thanks for buying
books from
SCHOLASTIC
Book Clubs
they help build our
classroom resources

St Brendan's Op Shop has
second hand school uniform
available.

**St Brendan's School uniform
available \$3.00 per item
unless otherwise marked.**

Open 10am-3pm Tuesday,
Wednesday & Thursday.



\$ Seesaw
Keeps everyone in the learning loop

Uniform Reminders

JEWELLERY is restricted to the following - a wrist watch, no more than **one** small plain matching pair of studs or sleepers in the ear lobe - gold, silver or gemstone, a religious medallion on a chain to be worn under clothing.

Fashion jewellery, make-up and nail polish are not permitted.

HAIR is to be kept neat and tidy at all times. Hair longer than collar length, must be **tied back completely**. This is to help restrict the spread of nits and lice and for student safety. Headband, hair ties, ribbons, scrunchies and clips must be **blue, black or brown**.

It is not appropriate for children to come to school with dyed or inappropriate hair styles as deemed by the Principal.



THE RESILIENCE PROJECT.

Parent & Carer Hub

When supporting your children's mental health, we know the best outcomes happen when we **work together** and **practise**.

Head over to our **Parent & Carer Hub** to learn more about the **evidence-based strategies** being taught in the classroom, so you can enhance their impact at home. You'll find activities you can practice to support your family's wellbeing.



Scan this QR code to learn more about our **Parent & Carer Hub**.



To learn more about The Resilience project, head to:

The Resilience Project The Resilience Project theresilienceproject.com.au



HEAD LICE ALERT

PLEASE CHECK YOUR CHILD'S HAIR TONIGHT!

TO CHECK

Check the scalp for insects or eggs.
Use a fine-tooth comb on wet hair then comb through the hair in sections looking for eggs or lice, repeat over a few days.

TO TREAT

Wet the hair and scalp with conditioner or use chemical shampoo/lotion (containing insecticide) - this will kill the lice and eggs. Using a fine metal comb, or special head lice comb you can get from a chemist, go through the hair in sections to comb the lice and eggs out.

Always re-treat 7-10 days after the first treatment, to kill any head lice that may have hatched from eggs that survived the first treatment.

TIPS

- ✓ Check and treat the hair every night
- ✓ Please tie up long hair for school
- ✓ If your child has head lice please check everyone in the family home
- ✓ Do not share hairbrushes, towels, hats/scarves etc.



As Pilgrims of Hope
Come experience a spiritual journey praying the Rosary with Mary in contemplation with her son Jesus.

St Mary's Parish Bairnsdale invites you to an online community Register for this free weekly ZOOM gathering on Monday nights: 7.00pm - 7.30pm Join us whenever you can!

Contact Michelle to receive a link to participate
Email: stm.michelle@gmail.com
or phone 03 5152 2942

INCLUDING HONEY CHICKEN:



Lunch Order

Example :

Name

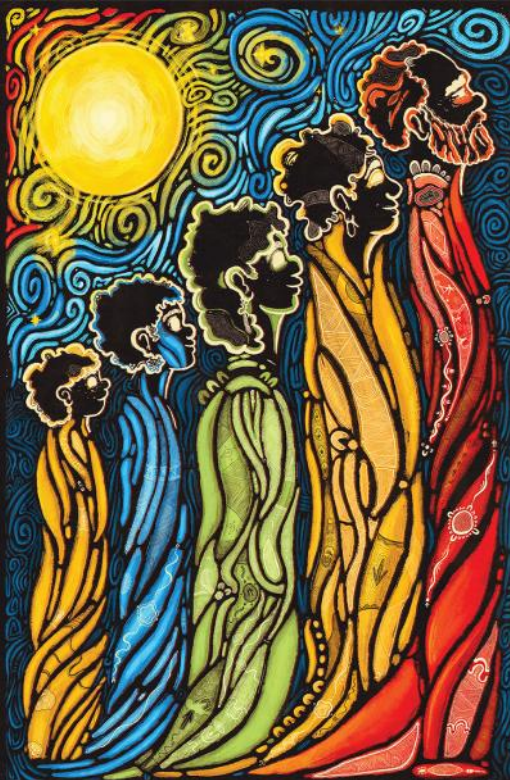
Class

1 Tuna & Avo sushi roll	\$4.00
1 Raspberry drink	\$3.00
Total	\$7.00

Thank you

Fried Rice	\$7
Fried Pork Gyoza (6pc)	\$7
Spring Rolls (4pc)	\$7
Chicken Hakkeiin Noodle	\$10
Honey Chicken + Fried Rice	\$10
Teriyaki Chicken + Fried Rice	\$10
Chicken Oyster Stir fry + Fried rice	\$10

Tofu	\$9
Lemongrass Chicken	\$9
Pork	\$9
Prawn	\$9
Pork & Prawn	\$9



**THE NEXT
GENERATION:
STRENGTH,
VISION &
LEGACY**
6-13 JULY 2025

This artwork is a visual representation of the generational lines that carry through my mob. When I think of the next generation, I think towards my ancestors—Lucy Wright, Enoch Wright, Hattie Wright—through to my Nanna Audie and my Mother Vanessa. Looking back gives me the strength and vision to look forward. Each figure in the painting is tied to family lines, like songlines, reflecting what they knew and what they passed on. The first represents love, healing and traveling. The second reflects care, weaving and love. The third shows the connection, while the final one carries our unfinished business—symbols of knowledge and care in motion. Above them sits the essence of Country—twirling skies and a giant moon over Emuwaite. It is by the fire, under these cool skies, where the next generation finds their strength, vision, and legacy.

#NAIDOC2025

#BLAKLOUDPROUD

 @naldocweek

 @noidocweek

 facebook.com/NAIDOC



KIDS DISCO Night

WEDNESDAY 9TH JULY
ST BRENDAN'S HALL

(ENTER THROUGH EASTERN BEACH RD)

5PM - 8PM

DJ HOLLY J

GLOW IN THE DARK FACE PAINTING

ACTIVITIES & GAMES

PHOTO BOOTH

PIZZA AND SNACK PACKS





LIONS CLUB OF GIPPSLAND LAKES
LIONESSES



INDOOR WINTER MARKET

**SAT 19TH JULY 2025
9AM - 2PM**

**MECHANICS HALL,
LAKES ENTRANCE**

Hand Crafts, Baby Knits, toys
Clothing, woodwork, books,
bric-a-brac, jams, preserves,
fresh produce, jewelry,
candles, plants and more

Lionesses
Devonshire Teas
Hot Soups &
Sandwiches

Enquiries to
Maria 0408393819



Follow us on Facebook:
Lions Club of Gippsland Lakes Lionsesses

BASKETBALL SKILLS CLINIC

LESC



COACH ADAM

**31st July 2025 | 3:30 PM
LESC Gymnasium**

FOR MORE INFO, CALL ADAM EVANS ON 0413 249 811
OR EMAIL ADAM.EVANS@EDUCATION.VIC.GOV.AU
TO REGISTER, CLICK THE LINK BELOW

<https://www.playhq.com/basketball-victoria/register/81d859>



EAST GIPPSLAND UNDER 15's GIRLS ACADEMY

Every 2nd Wednesday June 4th Onwards

Bairnsdale City Oval | 5:00pm Start

Female Football Gippsland invites girls born 2010-2014 to join the Girls Academy — a welcoming, inclusive program for those ready to develop their skills and take on competitive football.

Perfect for players transitioning from mixed teams or new to the game, the Academy focuses on growth, confidence, and enjoying footy in a supportive environment.



REGISTRATION ARE NOW OPEN

<https://www.playhq.com/afll/register/ad2013>

Contact Tom Crellin 0447 295 014
for more information



premiers
reading
challenge



The 2025 Victorian Premiers' Reading Challenge is now open and St Brendan's is excited to be participating.

The PRC application offers a range of exciting features including:

- access to a library catalogue (including book images and blurbs)
- a modern user-friendly interface
- rewarding students with badges as challenge milestones are achieved
- the option for students to mark books as a favourite, give them a star rating or complete a book review

The Challenge is open to all Victorian children from birth to Year 10 in recognition of the importance of reading for literacy development. It is not a competition; but a personal challenge for children to read a set number of books by 5th September, 2025.

Children from Foundation to Year 2 are encouraged to read or 'experience' 30 books with their parents and teachers. Children from Year 3 to Year 10 are challenged to read 15 books.

All children who meet the Challenge will receive a certificate of achievement signed by the Victorian Premier and former Premiers.

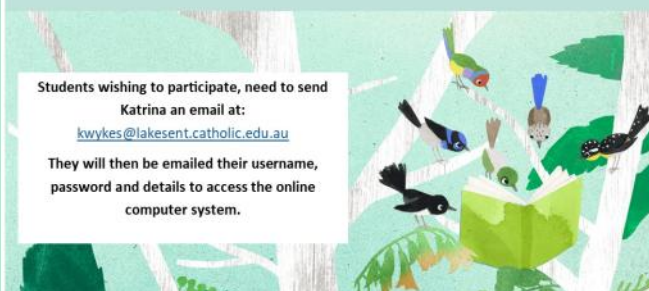
To view the booklist and for more information about the Victorian Premiers' Reading Challenge, visit: vic.gov.au/premiers-reading-challenge

The Premiers Reading Challenge has an online recording system which is intended for students to enter their books at home.

Students wishing to participate, need to send Katrina an email at:

kwykes@lakesent.catholic.edu.au

They will then be emailed their username, password and details to access the online computer system.





JULY
7TH - 11TH

JULY

HOLIDAY CLASSES

GYMNASTICS - NINJA - TRAMPOLINE

\$15 PER SESSION

FOR MORE INFO EMAIL
eastgippslandgymnastics@gmail.com

BOOK YOUR SPOT NOW



SCHOOL HOLIDAY PROGRAMS




SCHOOL HOLIDAYS SORTED

BAIRNSDALE CITY OVAL

THURSDAY JULY 10TH

9AM - 3PM

AGES 5-12



HOLIDAY
intensive
SWIM PROGRAM

FAST TRACK YOUR CHILDS SWIMMING ABILITY!

Monday 14 July - Friday 18 July 2025

For ages 3 and up

Cost: \$60

On confirmation of booking a \$20 deposit will be required to secure your child's spot.

Enrolments due Friday 4 July

DAILY 30 MINUTE LESSONS OVER 5 DAYS!



ENROL ONLINE OR SCAN THE QR CODE



 43 Palmers Road, Lakes Entrance
P (03) 5155 3333
www.lakesaquadome.com.au

 Lakes Entrance Aquadome



EAST GIPPSLAND WINTER FESTIVAL

20 JUNE – 20 JULY 2025



Experience How We Winter

Be welcomed by friendly locals and creative communities for a region-wide celebration of luminous art, epic winter feasts, lively music, dark skies and roaring fires.





SCAN FOR
FESTIVAL
PROGRAM






Nagle College
Bairnsdale



ENROLMENTS YEAR 7 2026

Nagle College is an active and proud Catholic learning community that provides a rich holistic education to the young people of East Gippsland.

Applications for Year 7 in 2026 will open on Monday 31 March 2025.

ENROLMENTS TIMELINE


Applications
Open


Applications
Close


Enrolment
Interviews


Offers of
Placement Made



Book Club **LOOP**

for Parents

LOOP is the Scholastic Book Club **Linked Online Ordering & Payment** platform for parents.

To order and pay for Scholastic Book Club by credit card visit:
[**www.scholastic.com.au/LOOP**](http://www.scholastic.com.au/LOOP)

GET IT ON


Download on the


FREE | BOOKINGS NOT REQUIRED
AGES 5 - 12

LEGO Club 2025

EAST GIPPSLAND
SHIRE LIBRARIES





Junior LEGO enthusiasts are invited to attend our after-school LEGO Club sessions

Head into your local library and flex your creative muscles making the LEGO builds of your dreams!

Donations welcome: the library will gladly accept donations of old or new LEGO brand pieces for our LEGO Club collection.

This is an unsupervised event - attendees must be accompanied by an adult.

Bairnsdale Library
Tuesdays
4.00 pm - 5.00 pm

Lakes Entrance Service Centre
Wednesdays
3.30 pm - 4.30 pm

Orbost Service Centre
Mondays
3.30 pm - 4.30 pm

Paynesville Service Centre
Wednesdays
3.30 pm - 4.30 pm

Omeo Service Centre
Wednesdays
3.30 pm - 4.30 pm

Mallacoota Service Centre
Wednesdays
3.30 pm - 4.30 pm



**Libraries
Change Lives**



FREE | NO BOOKINGS REQUIRED

We're Back!

EAST GIPPSLAND
SHIRE LIBRARIES



Rhymetime Returns



Join us for our first Rhymetime session of 2025!

This is a wonderful opportunity for children to explore the magic of stories and the joy of reading. Enjoy engaging tales that inspire creativity and imagination, along with fun songs and rhymes!

Rhymetime sessions are designed for children under 2 years and their parent/carers and run for approximately 30 minutes.

Bairnsdale Library
Wednesday 5 February
10.30 am - 11.00 am

Lakes Entrance Service Centre
Wednesday 5 February
11.00 am - 11.30 am

Orbost Service Centre
Thursday 6 February
10.00 am - 10.30 am

Paynesville Service Centre
Monday 3 February
10.30 am - 11.00 am

Mallacoota Service Centre
Tuesday 4 February
10.00 am - 10.30 am



**Libraries
Change Lives**