

St Brendan's Primary School 1581

40 Golf Links Road, Lakes Entrance 3909

Ph: 03-51552712 Fax 03-51554565

Website : www.lakesent.catholic.edu.au

Email : principal@lakesent.catholic.edu.au

Internet Banking : BSB 083 879 A/C 695096861

Account Name : St Brendan's School

Newsletter No 10

April, 22 2021



I would like to begin by acknowledging the Traditional Custodians of the land on which we gather today, the Gunaikurnai people.

I pay my respects to their Elders past, present and emerging. I extend that respect to all people here today.

I would especially like to acknowledge the land on which our school stands and ask everyone to show respect to the environment and all that it includes.



Mother's Day Breakfast

You are invited to come to the St Brendan's Primary
School Mother's Day Breakfast and prayer on

Friday, 7th May, 8.00am

at the Mary MacKillop hall.

For catering purposes, please return the reply slips
before Wednesday, 28th April.

There will be raffle so bring along some loose change.

**Good Luck to the students participating in the
Division Cross Country on Monday 26th, April!**



Seagulls Lunch order Menu & Price List 2021

Hot dog	\$4.50
Hot dog with cheese	\$5.00
Ham & Cheese Sandwich	\$4.50
Cheese & Vegemite Sandwich	\$4.00
Steamed Dim Sims	\$1.00 each
Fried Dim Sims	\$1.00 each
(soy sauce free)	
Chicken Strips	\$1 each
Party Pies	\$1 each
Small Sausage Rolls	\$1 each
Sauce	.30c each
All orders will need to be in by Wednesday morning—before 12pm for lunch on Friday.	

NEW



Wishing **Mitchell Hanckel**-Year 3
all the best with his swim at the
State Swimming Championships
on Monday, 26th
April.

**Good Luck and
have fun!**



Dear Families and Friends,

The term has begun brilliantly with happy faces entering the grounds on Monday. We have leapt straight into stride with the running of our **Cross Country Carnival**. As usual Luke Bates ran a marvellous event. With plenty of support on the sidelines from students and parents, our competitors put up some incredible performances. Congratulations to Blue House, it is the first time they have taken out the trophy!

This week our school also hosted the **Stephanie Alexander team at St Brendan's** to appreciate the flavours of our veggie and indigenous garden and to cook up a storm together. Jane Whelan prepared our setting beautifully and the day was a huge success with visitors from other school taking away some great ideas for their own projects.

Healthy eating and food messages for your child - <https://raisingchildren.net.au/>

Healthy eating habits start at home. Giving your child healthy nutritious foods is important for their growth and development. It also helps to surround your child with **messages about healthy eating habits** and food. This can help your child make healthy food choices. Here are some ideas:

- Try to have a bowl full of fresh fruit within easy view and reach on the kitchen table or bench. You can offer fruit as a snack or if your child is still hungry after meals.
- Stock your pantry and fridge with plenty of healthy, nutritious options, and leave the sometimes food on the supermarket shelves.
- Try to choose fruit and vegetables of different colours, textures and tastes. The more variety there is, the more likely it is your child will find something that they're interested in eating.
- Get your child involved in planning and preparing meals. If your child has helped to make the meal, they're more likely to eat it.
- Enjoy healthy meals together as a family as often as possible. Also look for opportunities to eat together at breakfast and on weekends.
- Turn the TV off while eating. This way your child is paying attention to eating and the fresh healthy food choices you offer.
- Read books that have healthy food messages for your child – for example, books with pictures of fruits and vegetables. Get your child to point out different types, colours, shapes and so on.



Coming Up:

Monday, 26 April, **Mitchell Hanckel will compete in the State Swimming Sporting Schools Victoria Championships** taking part in the 50m Backstroke. What is most impressive about this achievement is that Mitch is 9 years of age in a 9/10 Years category. We will all be supporting Mitch at school by watching the race live on <https://www.ssv.vic.edu.au/Pages/SSVTV.aspx>. Please take a few moments out of your day to log on and watch his race/s.

Monday, 26 April we will have our Term 2 Parents and Friends meeting in the school staffroom at 5.00pm to discuss upcoming events. We have quite a lot on and are still looking for a president for this year. Everyone is welcome, please join us.

Friday, 30 April is the date for our **St Brendan's Athletics Carnival**. Please join us on the Shanley oval for a few events or the whole day. Luke Bates will be looking for a few volunteers and we will have a coffee van on site. We are all hoping for some blue skies on that day.

I am looking forward to seeing our families returning to school this term. I would like to post a big welcome to our new students **Charli (Yr 4) and Blake Cherry (Yr 2) and Charli Owen (Yr 2)**.

Please note that **school tours are now being conducted** for families looking to enrol children for 2022. This is a new format and one that provides a personal tour of our spectacular buildings and grounds with an insight into the learning that takes place at St Brendan's Catholic Primary School.

Kind regards,

Matthew Hamer

Dates for the Calendar

APRIL 2021

	Friday 23rd	Lunch Order Delivery Day (if you have placed an order)
Week 2	Monday 26th	State Swimming—Good luck, Mitchell! Division Cross Country—Good Luck, Team! 5.00pm Parents & Friends meeting
	Wednesday 28th	Lunch Orders to school before 12pm
	Friday 30th	St Brendan's Athletics Carnival Lunch Order Delivery Day (if you have placed an order)

JUNE 2021

Week 8	Thursday 10th	Pupil Free Day—Staff RE Development & Planning
	Friday 11th	Pupil Free Day—Staff RE Development & Planning
Week 9	Monday 14th	Pupil Free Day—Queens Birthday Holiday

PAM (Parent Access Module)

Just a reminder to sign in to **PAM**. We still have quite a few families who have not set themselves up yet. It would be greatly appreciated if you could sign up.

PAM will be our main communication platform (reporting absentees, receiving permission slips, sick bay notification, receiving school reports and school diary dates).

If you are having difficulty signing on, or didn't receive, can't find or accidentally deleted the original email from PAM please email the school office and we will reset your account for you.

Thank you to the families who have already signed up.



Book Club Orders

If you placed an order in Issue 2 and ordered either of the following books can you please contact the office.

- **The Bad Bassinis**—No name on order form & No money
- **DIY Putty Lab**—No name on order form

Thank you



Found on the Playground.
Please contact the office to collect.



NOTE: **JEWELLERY** is restricted to the following - a wrist watch, no more than one matching pair of **studs or sleepers**, a religious medallion on a chain to be worn under clothing. Fashion jewellery, make-up and nail polish are not permitted.

St Brendan's & St Colman's Catholic Church - Mass Times

Mon: 26/4	Funeral Prayers for John Brereton		
	St Brendan's	Lakes Entrance	11.00am
Tues: 27/4	St Brendan's	Lakes Entrance	9.30am
Wed: 28/4	St Colman's	Orbost	9.30am
Fri: 30/4	St Brendan's	Lakes Entrance	9.30am
Sat: 1/5	St Colman's	Orbost	5.00pm
Sun: 2/5	St Brendan's	Lakes Entrance	9.00am
	St Joseph's	Swan Reach	11.00am



Year 4 Camp - Karoondá Park



Year 4 Camp - Kāroondā Park



Sometimes parents want to alter the arrangements about picking up children after school.

Please try and make these arrangements in the morning so that you can explain to your child the arrangements.

A key ring on your child's school bag is a good idea. This lets them know what is happening at the end of the day—carline, bus tonight, pick up outside classroom.



A reminder that the car park at the front of the school and the church are **NOT** drop off zones. If you enter these car parks you **MUST** walk your children into the school. **DROP OFF ZONE** is via the Mary MacKillop Hall carpark only. The Disabled Parking spaces are only for people with permits.

St Brendan's Op Shop has second hand school uniform available. Winter uniform in stock.

Open 10am-2pm
Tuesday, Wednesday &
Thursday also open
Easter Saturday &
Monday 10am-2pm



CORONAVIRUS (COVID-19) RESTRICTIONS REMAIN IN PLACE

If you are unwell, please stay at home.

The greatest risk of transmission of coronavirus (COVID-19) is between adults. Please follow these physical distancing measures:

- avoid gathering in a group inside or around the school



- avoid handshakes and hugs



- keep 1.5m between yourself and other adults



- wash your hands regularly.



Issue 3 OUT NOW!



 **SCHOLASTIC**

Orders are due:

Thursday, 6th April



IGNITE A PASSION FOR THE GAME!

Lakes Entrance Auskick

1 Rowe St Lakes Entrance

Thursday 5pm - 6pm

Brett Campisi
0439 906 021

play.afl/auskick

NAGLE HOCKEY

The Nagle Hockey Club is a family friendly club that is committed to providing a safe and supportive environment for young people to develop friendships, sporting skills and positive self-esteem.

We are currently recruiting players for all age groups – U11, 13, 15 & 18. Ages are calculated from January 1st in the year of play.

Where do you train and play?

All games are played on Saturday morning.

8 of the 12 games will be played in Bairnsdale, 1 in Orbost and 3 in Sale.

Training is held on Wednesday afternoons, after school, at the Nagle College Hockey oval.

Who else is in the competition?

As well as the Nagle Hockey Club there are teams from: Bairnsdale, Swan Reach, Orbost, Sale, Wellington and Maffra.

Do I have to attend every training session and game?

While it is ideal to attend the training that is offered and play each weekend this is not compulsory. Every family situation is different, and we are happy for you to train and play as often as you can.

I don't know how to play hockey

Don't be worried about not knowing how to play hockey as everyone starts out as a beginner. We are happy to teach you how to love this sport as much as we do.

How much will it cost?

There are two parts to your hockey fees.

PL1 Sporting Insurance that is paid to Hockey Victoria. This will cost \$73. (Less for U11)

PL2 covers the cost of ground hire, umpires, coaching and trophies - \$60

Check to see if you are eligible for the Government \$200 rebate for sporting expenses.

<https://www.getactive.vic.gov.au/vouchers/how-to-apply/>

If these fees sound too expensive, talk to us so we can find a solution.

What equipment do I need?

Players will need to supply their own black shorts, long yellow socks and a mouthguard. All other equipment will be provided.

To register interest or ask further questions please contact either Anne or Paula

Paula: paonell@nagle.vic.edu.au or phone: 0409 142 599
Anne: adaffy@nagle.vic.edu.au or phone: 0418 125 905

Open
Womens

Under
11

Netball comp
is back!

Wednesdays

at Lakes

Entrance

Netball courts

Under
13

Under
15

Register your teams for our first netball competition for 2021

Registrations close by 24 April 2021

Competition starts 28 April 2021

'Lakes Entrance Netball Association' Facebook page or email lakesentrancenab@gmail.com for more information on registration

Under 11 – (Ages 7-11) Cost: (Each player)
\$40 Skills and Games
4pm – 5pm

NET SET GO coming soon...

Under 13 & Under 15
Cost: \$250 per team
5pm onwards

Open Womens
Cost: \$250 per team
5pm onwards

Wednesdays @Lakes
Entrance Netball
courts, Rowe Street



Lakes Entrance
Netball Association

EAST GIPPSLAND
SHIRE LIBRARIES

FREE

AGES 5 - 12

BOOKINGS NOT REQUIRED

LEGO Club 2021



Junior LEGO enthusiasts are invited to attend our after-school LEGO Club sessions

The sessions incorporate freestyle creativity and themed construction activities.

Donations welcome

The library will gladly accept donations of old or new LEGO brand pieces for our LEGO Club collection.

Children aged six and under must be accompanied by an adult.

Libraries
Change Lives



Lakes Entrance
Service Centre
3.40 pm – 4.40 pm

Every Wednesday
Except School Holidays
Commencing 3 March

For more information, phone
5152 4225 or ask in person at
the library about these FREE
sessions.

2021 Cinema PROGRAM

2021 Cinema PROGRAM

www.lakes-entrance-cinema.com.au

LAKE SQUASH AND MOVIE THEATRE

52 MYER STREET LAKES ENTRANCE ADMIN 51551563. SESSIONS 51551941

BIG SCREEN • DIGITAL CINEMA • NEW IMPROVED AIR CONDITIONING • BIG SURROUND SOUND

Wednesday 21st April

10am, 2.15pm Peter Rabbit 2 (G) 103'

12pm, 6.30pm Tom & Jerry (G) 111'

4.15pm, 8.45pm Nomadland (M) 117'

Thursday 22nd April

11am, 6.30pm Nomadland (M) 117'

1.15pm, 8.45pm Nobody (MA15+) 98'

3.45pm Godzilla vs Kong (M) 123'

Friday 23rd April

6.30pm Nomadland (M) 117'

8.45pm Nobody (MA15+) 98'

Saturday 24th April

11am Peter Rabbit 2 (G) 103'

1.15pm, 6.30pm Nomadland (M) 117'

3.45pm, 8.45pm Nobody (MA15+) 98'

Sunday 25th April

11am Tom & Jerry (G) 111'

1.15pm, 7.30pm Nobody (MA15+) 98'

3.15pm Nomadland (M) 117'

Monday 26th April

6.30pm Nomadland (M) 117'

8.45pm Nobody (MA15+) 98'

Tuesday 27th April - Closed

Wednesday 28th April

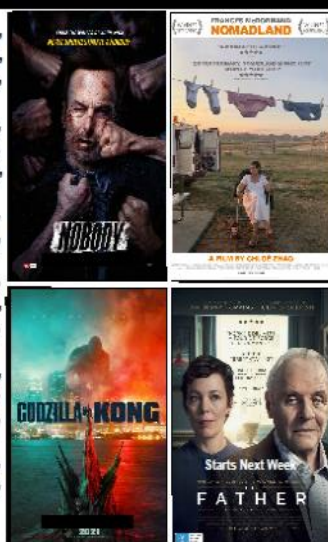
11am, 6.30pm Nomadland (M) 117'

1.15pm, 8.45pm Nobody (MA15+) 98'

3.45pm Godzilla vs Kong (M) 123'

Our Covid Plan:

- Preferred QR Scan on Entry or Write your Christian Name and Ph No. on entry if QR not possible.
- Contactless payments preferred.
- Maintain "Social Distancing" (1.5m)
- Exit via Bottom Door to maximise "Social Distancing"
- Sanitizing stations are located throughout the Building.
- When possible choose seating that is at least one seat distance from others if possible.



EFTPOS & CREDIT CARD FACILITIES AVAILABLE

Ticket Prices...	Adult	Senior (with Card)	Child (under 14)	Choovietnamet
2D MOVIE	\$15.00	\$12.00	\$11.00	Adult \$14.50
3D MOVIE	\$17.00	\$14.00	\$13.00	
Family (2a & 2c)	\$46.00(2D)	\$46.00(3D)	\$54.00(3D)	

3D glasses \$1 per ticket for you to keep, if needed.

\$2 surcharge applies to all gift vouchers and 6 ticket movie cards on a per ticket basis for all 3D movies.

Censorship Classification

(G) For General Exhibition
(PG) Parental Guidance recommended for persons under 15 years
(M) Recommended for Mature Audiences 15 years and over (MA15+) Not suitable for people under 15 years. Under 15s must be accompanied by a parent or adult guardian

Coming Soon:

The Father (29/4), Wrath of Man, Cruella

St Brendan's Catholic Primary School



Enrolments are open for 2022

**Book your personalised
school tour!**

**Check out our new
classrooms!**

**Tours available in
Terms 2 & 3**



Together we achieve

**All families are
welcome!**

**Call the school office on
03 51552712 or email
principal@lakesent.catholic.edu.au
to book your tour**

www.lakesent.catholic.edu.au